

1 INTERNET-DRAFT 6 ISSUES are highlighted like this.
2 <draft-ietf-ipp-notification-spec-00.doc>

3
4 S. Isaacson
5 Novell, Inc.
6 J. Martin
7 Underscore
8 R. deBry
9 Utah Valley State College
10 T. Hastings
11 Xerox Corporation
12 M. Shepherd
13 Xerox Corporation
14 R. Bergman
15 Dataproducts Corp.
16 July-August 2225, 1999

17 Internet Printing Protocol/1.0 & 1.1: **IPP Event Notification Specification**

18 Copyright (C) The Internet Society (1999). All Rights Reserved.

19 Status of this Memo

20 This document is an Internet-Draft and is in full conformance with all provisions of Section 10 of
21 [RFC2026]. Internet-Drafts are working documents of the Internet Engineering Task Force (IETF), its
22 areas, and its working groups. Note that other groups may also distribute working documents as Internet-
23 Drafts.

24 Internet-Drafts are draft documents valid for a maximum of six months and may be updated, replaced, or
25 obsoleted by other documents at any time. It is inappropriate to use Internet-Drafts as reference material or
26 to cite them other than as "work in progress".

27 The list of current Internet-Drafts can be accessed at <http://www.ietf.org/ietf/1id-abstracts.txt>

28 The list of Internet-Draft Shadow Directories can be accessed as <http://www.ietf.org/shadow.html>.

29 **Abstract**

30 This document describes an extension to the IPP/1.0 & IPP/1.1 model that allows end-users a client to
31 subscribe to printing related events. Subscriptions include "Per-Job Subscription subscription" and "Explicit
32 Per-Printer subscriptions".

33 One or more Per-Job Subscription subscriptions are specified by the end-user client when submitting a job.
34 Explicit One or more Per-Printer subscriptions are created by performing separate explicit subscription
35 Create-Printer-Subscription operations on the Printer or an identified Job object. Four other operations are
36 defined for Per-Printer subscription objects: get attributes, get subscriptions, renew a subscription, and
37 cancel a subscription.

38 A subscription includes:

39 the names of Job and/or Printer events, that are of interest to the subscriber

40 the ~~delivery methods and addresses to use for notifications (socket, email, etc.)~~ Notification Recipient URL,
41 the Notification content MIME type,
42 possibly some opaque data and the charset and natural language. In addition, the Per-Printer subscription
43 includes: the requested lease time and persistency for the subscription. ~~Job Submission Subscriptions: A~~
44 ~~simple method is provided for subscribing to printing related events when a job is submitted:~~
45 ~~Two new subscription attributes are supplied by the client as part of an IPP create request (Print Job,~~
46 ~~Print URI, Create Job, Validate Job): "notify-recipients (1setOf uri)" and "notify-events (1setOf~~
47 ~~type2 keyword)".~~
48 ~~An event is some occurrence (either expected or unexpected) within the printing system. Events can be~~
49 ~~classified along two dimensions:~~
50 ~~Either as Job Events or Printer Events, and~~
51 ~~Either as Errors, Warnings, or Reports~~
52
53 ~~"Explicit Subscriptions": Three new Printer operations are specified: Subscribe Job, Subscribe Printer,~~
54 ~~Renew Subscription, and Unsubscribe. The semantics of the two subscription Operation attributes~~
55 ~~("notify-events" and "notify-recipients") used in create operations is preserved. These two subscription~~
56 ~~attributes are supplied by the client as operation attributes in this new Subscribe operation, along with a~~
57 ~~new "notify-lease-time" operation attribute.~~
58 ~~A client can remove a subscription explicitly using the Unsubscribe operation or can let the lease time~~
59 ~~expire. A client can extend the lease time for a subscription using the Renew Subscription operation.~~
60
61 When the event occurs, a notification is generated and delivered using the information specified in the job's
62 subscription ~~which was submitted with the job.~~
63

64 The full set of IPP documents includes:

65 Design Goals for an Internet Printing Protocol [IPP-REQ]

66 Rationale for the Structure and Model and Protocol for the Internet Printing Protocol [IPP-RAT]

67 Internet Printing Protocol/1.1: Model and Semantics [IPP-MOD]

68 Internet Printing Protocol/1.1: Encoding and Transport [IPP-PRO]

69 Internet Printing Protocol/1.0: Implementer's Guide [IPP-IIG]

70 Mapping between LPD and IPP Protocols [IPP LPD]

71

72 The "Design Goals for an Internet Printing Protocol" document takes a broad look at distributed printing
73 functionality, and it enumerates real-life scenarios that help to clarify the features that need to be included
74 in a printing protocol for the Internet. It identifies requirements for three types of users: end users,
75 operators, and administrators. It calls out a subset of end user requirements that are satisfied in IPP/1.0.
76 Operator and administrator requirements are out of scope for version 1.0. A few OPTIONAL operator
77 operations have been added to IPP/1.1.

78 The "Rationale for the Structure and Model and Protocol for the Internet Printing Protocol" document
79 describes IPP from a high level view, defines a roadmap for the various documents that form the suite of
80 IPP specifications, and gives background and rationale for the IETF working group's major decisions.

81 The "Internet Printing Protocol/1.1: Model and Semantics", describes a simplified model with abstract
82 objects, their attributes, and their operations that are independent of encoding and transport. It introduces a
83 Printer and a Job object. The Job object optionally supports multiple documents per Job. It also addresses
84 security, internationalization, and directory issues.

85 The "Internet Printing Protocol/1.1: Encoding and Transport" document is a formal mapping of the abstract
86 operations and attributes defined in the model document onto HTTP/1.1. It defines the encoding rules for a
87 new Internet MIME media type called "application/ipp". This document also defines the rules for
88 transporting over HTTP a message body whose Content-Type is "application/ipp". This document defines
89 a new scheme named 'ipp' for identifying IPP printers and jobs. Finally, this document defines
90 interoperability rules for supporting IPP/1.0 clients.

91 The "Internet Printing Protocol/1.0: Implementer's Guide" document gives insight and advice to
92 implementers of IPP clients and IPP objects. It is intended to help them understand IPP/1.0 and some of
93 the considerations that may assist them in the design of their client and/or IPP object implementations. For
94 example, a typical order of processing requests is given, including error checking. Motivation for some of
95 the specification decisions is also included.

96 The "Mapping between LPD and IPP Protocols" document gives some advice to implementers of gateways
97 between IPP and LPD (Line Printer Daemon) implementations.

98
99**Table of Contents**

100	1	Introduction	6
101		1.1 Notification Overview	6
102	2	Model for Per-Job and Per-Printer Subscription and Event Notification.....	8
103		2.1 Model for Per-Job Subscription and Notification	8
104		2.2 Model for Per-Printer Subscription and Notification	10
105		2.3 Relationship between the Printer object and the Notification Delivery Service	10
106	3	Terminology	12
107		3.1 Conformance Terminology	12
108		3.2 Other terminology	12
109	4	Object Model for Notification	14
110		4.1 Object relationships	15
111	5	Object attributes defined for Notification.....	16
112		5.1 "job-notify" (1setOf collection) Job Description attribute	16
113		5.2 Subscription object attributes	17
114		5.3 Common Per-Job and Per-Printer Subscription attributes	18
115		5.3.1 notify-recipient (uri)	18
116		5.3.2 notify-events (1setOf type2 keyword)	20
117		5.3.3 notify-content-type (mimeMediaType)	23
118		5.3.4 subscriber-user-data (octetString(63))	24
119		5.3.5 notify-attributes-charset (charset)	24
120		5.3.6 notify-attributes-natural-languages (naturalLanguage)	24
121		5.3.7 request-id	25
122		5.4 Additional attributes for the Subscription object <i>only</i>	25
123		5.4.1 subscription-id (integer (1:MAX))	25
124		5.4.2 notify-lease-expiration-time (integer(0:MAX))	25
125		5.4.3 printer-uri (uri)	26
126		5.4.4 subscriber-user-name (name(MAX))	26
127		5.4.5 notify-printer-up-time (integer(1:MAX))	26
128		5.5 Printer Description Attributes related to Notification	26
129		5.5.1 notify-schemes-supported (1setOf uriScheme)	27
130		5.5.2 notify-events-default (1setOf type2 keyword)	27
131		5.5.3 notify-events-supported (1setOf type2 keyword)	27
132		5.5.4 max-events-supported (integer(5:MAX))	27
133		5.5.5 max-job-subscriptions-supported (integer(1:MAX))	28
134		5.5.6 max-printer-subscriptions-supported (integer(0:MAX))	28
135		5.5.7 notify-lease-time-supported (rangeOfInteger(0:MAX))	28
136		5.5.8 notify-lease-time-default (integer(0:MAX))	28
137		5.5.9 persistent-jobs-supported (boolean)	28
138		5.5.10 persistent-subscriptions-supported (boolean)	28
139		5.5.11 printer-state-change-time (integer(1:MAX))	29
140		5.5.12 printer-state-change-date-time (dateTime)	29

141	6	Notification Content	29
142	6.1	Notification content MIME media type formats	29
143	6.2	Notification content attributes common to Job and Printer events.....	30
144	6.3	Additional Notification content attributes for Job events <i>only</i>	31
145	6.4	Additional Notification content attributes for Printer events <i>only</i>	32
146	7	Operations for Per-Job Subscriptions.....	36
147	7.1	Job Creation Operations (Create-Job, Print-Job, Print-URI) and Validate-Job	36
148	7.2	Get-Printer-Attributes operation.....	37
149	7.3	Get-Job-Attributes operation.....	37
150	7.4	Set-Job-Attributes operation.....	38
151	8	Per-Printer Subscriptions and the Subscription object.....	38
152	8.1	Create-Printer-Subscription operation.....	39
153	8.2	Get-Printer-Subscription-Attributes operation	41
154	8.3	Get-Printer-Subscriptions operation	41
155	8.4	Renew-Printer-Subscription operation	42
156	8.5	Cancel-Printer-Subscription operation	44
157	9	Comparison of Per-Job Submission Subscriptions versus Per-Printer Subscriptions.....	44
158	10	Conformance Requirements	55
159	11	IANA Considerations	55
160	12	Internationalization Considerations.....	55
161	13	Security Considerations.....	56
162	14	Status Codes	56
163	14.1	client-error-uri-notification-scheme-not-supported (0x04??)	56
164	14.2	server-error-too-many-subscriptions (0x04??).....	57
165	14.3	server-error-too-many-events (0x04??).....	57
166	15	References	57
167	16	Author's Addresses	58
168	A.	Appendix - Summary of Notification Attribute Usage	60
169	17	Appendix C: Full Copyright Statement.....	65

170

171 **1 Introduction**

172 This IPP notification specification is an extension to IPP/1.0 [RFC2568, RFC2569]. This document in
173 combination with the following documents is intended to meet the notification requirements described in
174 [ipp-not-req]:

175 Internet Printing Protocol/1.0 & 1.1: "Collection Attribute Syntax" [ipp-coll]
176 Internet Printing Protocol/1.0 & 1.1: "Job Progress Attributes" [ipp-prog]
177 Internet Printing Protocol/1.0 & 1.1: "Notification Change History" [ipp-not-hist]

178 The rest of this document is laid out as follows:

- 179 - The rest of Section 1.1 is an overview of IPP Notification.
- 180 - Section 2 is the model for network entities that use IPP notification, including clients (desktop and
181 servers), IPP Printers (servers and devices), and Notification Recipients.
- 182 - Section 3 is the terminology used throughout the document.
- 183 - Section 4 is the object model for notification, including Job, Printer, and Subscription objects.
- 184 - Section 5 defines the notification attributes for each of the Job, Printer, and Subscription objects.
- 185 - Section 6 defines the content of Human Consumable and Machine Consumable Event
186 Notifications.
- 187 - Sections 7, 8, and 9 define the Per-Job and Per-Printer Subscription mechanisms.
- 188 - Section 10 and 11 define the conformance requirements and IANA requirements, respectively.
- 189 - Section 12 - 14 cover Internationalization, Security, and Status codes.

190 **1.1 Notification Overview**

191 A client can establish an event notification subscription so that when one of the specified events occurs, an
192 asynchronous Notification is sent to a specified Notification Recipient.

193 One or more Per-Job Submission subscriptions are specified by the client when submitting a job. One or
194 more Per-Printer subscriptions are created by performing separate explicit Create-Printer-Subscription
195 operations on the Printer.

196 A Per-Job or Per-Printer subscription includes:

- 197 1. the names of Job and/or Printer events that are of interest to the Notification Recipient
- 198 2. the delivery method and address to use to deliver the notification to one Notification Recipient
- 199 3. whether Human Consumable or Machine Consumable notification content is to be sent
- 200 4. some opaque data that the subscriber wants to be send to the Notification Recipient in the
201 Notification, perhaps to identify either the subscriber or the ultimate recipient
- 202 5. the charset to use in the Notification, if it is to be different than the one used in the request that
203 created the subscription

- 204 6. the natural language to use in the Human Consumable Notification, if it is to be different than the
 205 one used in the request that created the subscription

206 In addition, a Per-Printer subscription includes:

- 207 7. the requested lease time in seconds for the subscription
 208 8. whether or not the subscription is requested to be persistent across power cycles.

209 For Per-Job subscriptions, a client requests job and printer event notification using the "job-notify"
 210 operation attribute when creating a job with any of the Job Creation operation: Print-Job, Print-URI, and
 211 Create-Job. The "job-notify" operation attributes may be submitted to the Validate-Job in order to be
 212 validated. The "job-notify" operation attribute is copied to the Job object as a Job Description attribute and
 213 so may be queried using the Get-Job-Attributes and Get-Jobs operations (see [ipp-mod]). Also this "job-
 214 notify" Job Description attribute may be changed using the Set-Job-Attributes (see [ipp-set2]). The "job-
 215 notify" operation attribute contains one or more collection values, each consisting of a number of member
 216 attributes the specify a subscription, so that a Job can contain more than one Per-Job subscription. The
 217 'collection' is a new attribute syntax (see [ipp-coll]). Table 1 summarizes the Per-Job Subscription
 218 operations and their salient input operation attributes. All operations are REQUIRED, except the Set-Job-
 219 Attributes operation.

220 **Table 1 - Summary of Per-Job Subscription operations**

<u>Operation:</u>	<u>salient inputs besides printer-uri:</u>
<u>Print-Job, Print-URI, Create-Job</u>	<u>1setOf {recipient, [events,] [content-type,] [user-data,] [charset,] [natural-language]}</u>
<u>Validate-Job</u>	<u>1setOf {recipient, [events,] [content-type,] [user-data,] [charset,] [natural-language]}</u>
<u>Get-Job-Attributes</u>	<u>job-id, [requested-attributes]</u>
<u>Set-Job-Attributes</u>	<u>job-id, 1setOf {[recipient,] [events,] [content-type,] [user-data,] [charset,] [natural-language]}</u>

221
 222 For Per-Printer subscriptions, a client requests job and printer event notification using new operations
 223 independent of any job. The Printer keeps each subscription in a separate Subscription object which is
 224 similar to a Job object in its operations and security. The Get-Printer-Attributes (see [ipp-mod]) returns the
 225 supported notification capabilities supported. The Create-Printer-Subscription operation creates an instance
 226 of the Subscription object supplying these new operation attributes and returns a subscription-id (analogous
 227 to a job-id for a Job object). These operation attributes are copied to the Subscription object as
 228 Subscription Description attributes and so may be queried using the Get-Subscription-Attributes and Get-
 229 Subscriptions operations. The subscriber requests a lease time for each Per-Printer subscription which
 230 MAY be infinite. The Printer grants a lease time according to its configured policy. A client MUST renew
 231 the Subscription before the granted lease time expires using the Renew-Printer-Subscription operation.
 232 Table 2 summarizes the Per-Printer-Subscription operations and their salient input operation attributes.

233

Table 2 - Summary of Per-Printer Subscription operations

<u>Operation:</u>	<u>salient inputs beside printer-uri:</u>
<u>Get-Printer-Attributes</u>	<u>[requested-attributes]</u>
<u>Create-Printer-Subscription</u>	<u>recipient, [events,] [content-type,][user-data,][charset,][natural-language,][lease-time-requested,] [persistence-requested]</u>
<u>Get-Printer-Subscription-Attributes</u>	<u>subscription-id, [requested-attributes]</u>
<u>Get-Printer-Subscriptions</u>	<u>[my-printer-subscriptions,] [requested-attributes]</u>
<u>Renew-Printer-Subscription</u>	<u>subscription-id, [lease time-requested]</u>
<u>Cancel-Printer-Subscription</u>	<u>subscription-id</u>

234

235 There are two steps that IPP notification must take regarding each event – an internal event recording, and
236 an external notification:

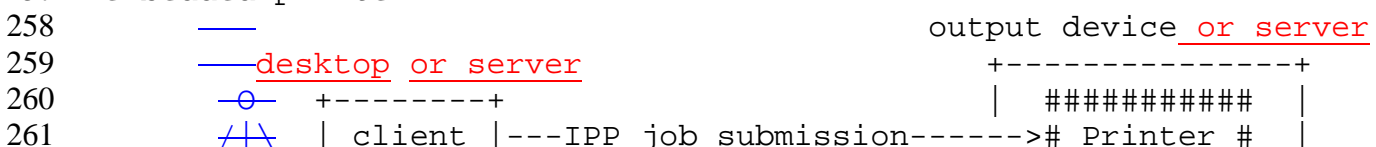
- 237 1) As an events occurs, the printer internally records in the job objects and the printer objects those
238 events which are required to be supported by the system and those that are subscribed to by a
239 notification recipient.
- 240 2) As an events occurs, ~~for each event~~ the Printer searches the set of subscriptions for any interest in
241 that event. As the Printer finds that some notification recipient is interested in that event (the
242 notification recipient is subscribed to the event), the "request-id" sequence number for that event is
243 incremented and a notification is generated and delivered using the methods and target addresses
244 identified in the subscription. The "request-id" sequence number permits a Notification Recipient to
245 detect duplicate notifications due either to duplicate subscriptions or retries and to detect dropped
246 notifications.

247 2 Model for Per-Job and Per-Printer Subscription and Event Notification

248 2.1 Model for Per-Job Subscription and Notification

249 "Per-Job Subscription-subscriptions" are created by ~~the end user~~ a client (desktop or server acting as a client)
250 upon as part of creation of the job in an IPP Printer (printing device or server). "Explicit Subscriptions"
251 are accomplished by performing independent operations on the printer or a certain job. More than one
252 subscription may be submitted with a job. The IPP Printer object delivers ~~the a~~ Notifications to the
253 Notification Recipient(s) supplied by the Client in each subscription. A Notification Recipient can be the
254 Job submitter or a third party.

255
256 Figure 1 shows the Per-Job subscription notification model for a simple Client - Printer relationship.
257 embedded printer:



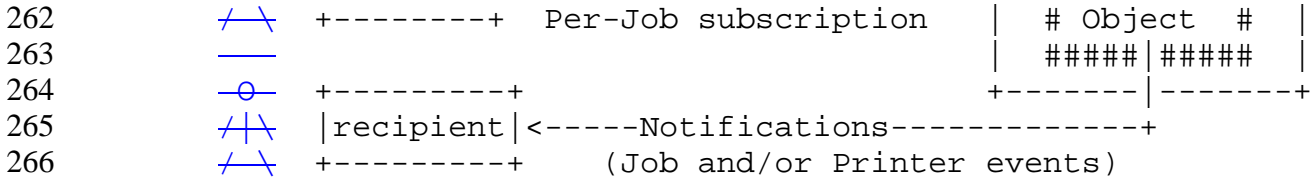
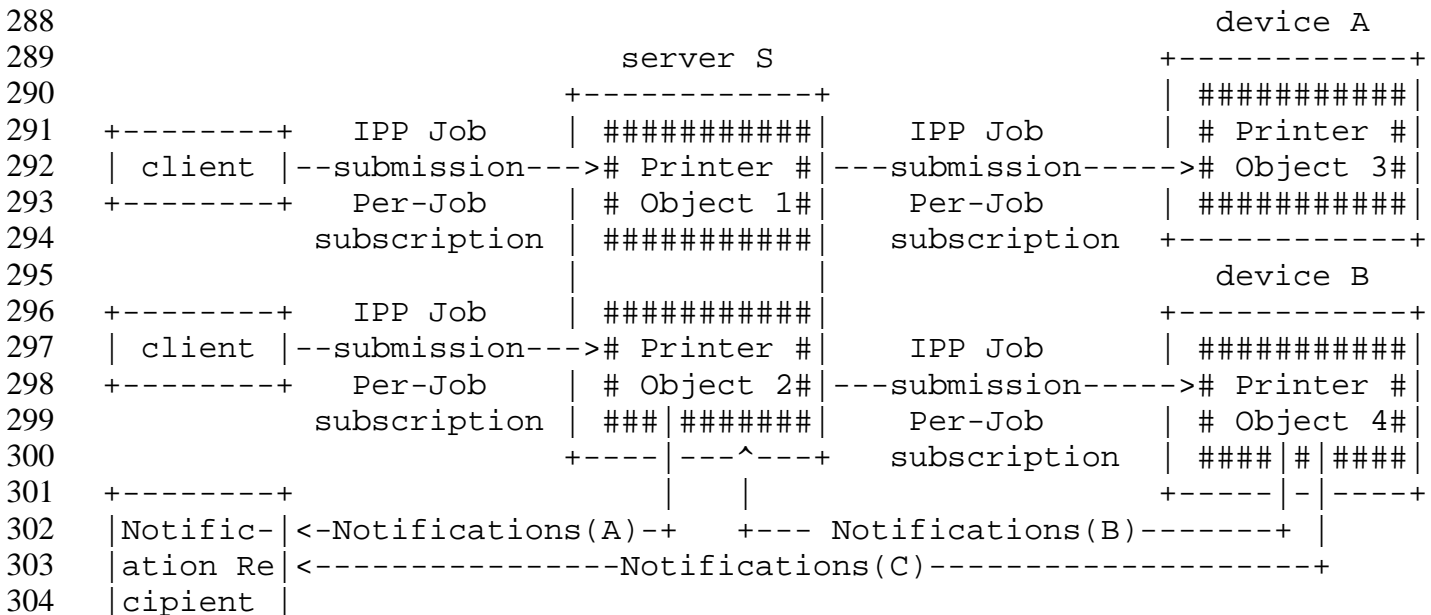


Figure 1 - Client-Printer Per-Job SubmissionSubscription and Notification Model

Figure 2 shows a (spooling or non-spooling) Server that implements two Printer objects (1 and 2) that represent two devices. The devices A and B that in turn each implement an IPP Printer object (3 and 4, respectively). The server implements one IPP Printer object (1 and 2) for each such device. The Server implementation has three choices for how to support Per-Job subscriptions to the client (and itself):

1. forward the Per-Job subscriptions to the down stream IPP Printer and let it perform the notification directly to the Notification Recipients supplied by the Client (Notifications(C)) and use Per-Printer Subscriptions for the Server's own purposes.
2. save the client-supplied Per-Job subscription on the Job object in the server and substitute its own Per-Job subscription with the Server as the Notification Recipient (Notifications(B)). Then the Server relays Notifications to the client-supplied Notification Recipients (Notifications(A)).
3. A combination of 1 and 2 in which the Server adds its own Per-Job subscriptions to those supplied by the client. Thus the IPP Job that goes to Printer object 4 has a combination of subscription information from both the Client and the Server. This latter approach is sometimes called "piggy-backing" because the Server is adding its Per-Job subscription information to that supplied by the client. Piggy-backing is especially useful, if device B also accepts (IPP or non-IPP) requests from other servers. Then when all the jobs from Server S have been completed by device B, there will be no more Job events sent to Server S. (Server S could still maintain a long term Per-Printer subscription with Printer D to that Server S can have Printer B's state track (shadow) that of Printer D or Server S could poll Printer D when queried about Printer B).

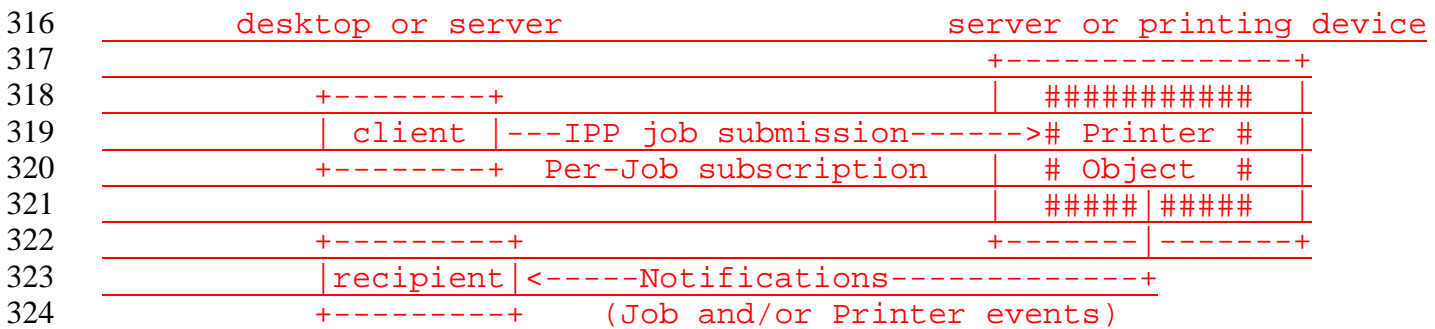


305 +-----+

306 **Figure 2 - Client-Server-Printer Per-Job Subscription and Notification Model**

307 **2.2 Model for Per-Printer Subscription and Notification**

308 Per-Printer subscriptions are created by a client (an end user, an operator, or a server acting as a client)
309 using a Create-Printer-Subscription operation that is independent of Job Submission. The Printer object
310 (printing device or server) creates a Subscription object to hold the attributes supplied by the subscriber.
311 The client creates separate Per-Printer subscriptions if more than one Notification Recipient is desired. The
312 Printer delivers Notifications to the Notification Recipient specified by each Per-Printer subscription. A
313 Notification Recipient may be the subscriber or a third party. Figure 3 shows the Per-Printer subscription
314 notification model for the Client - Printer relationship where the client may be an end user, an operator, or a
315 server acting as a client.



325 **Figure 3 - Client-Printer Per-Printer Subscription and Notification Model**

326 **2.3 Relationship between the Printer object and the Notification Delivery Service**

327 Note: This The IPP Notification model does not mandate that the IPP Printer object implement the full
328 semantics of subscription, report generation, and multiple delivery methods itself. An ~~simple (embedded)~~
329 implementation may be configured to use some other notification service. Figure 4 shows this partitioning.

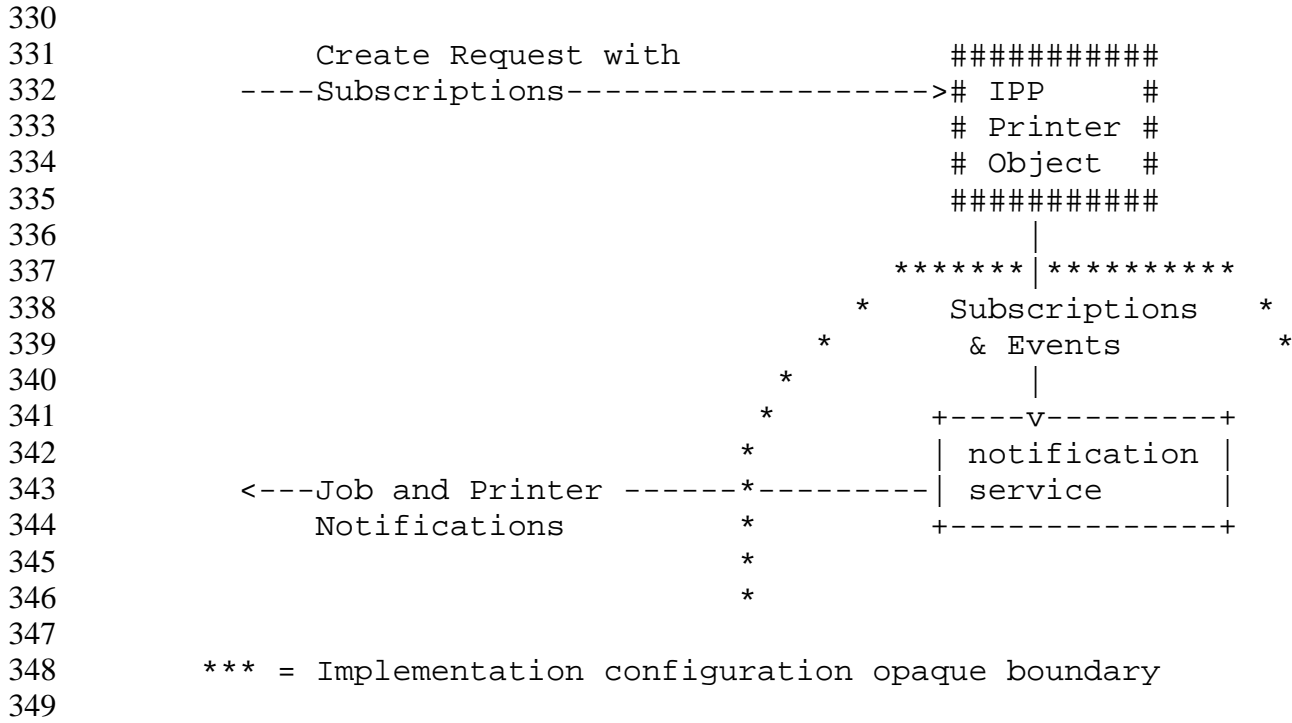


Figure 4 - Opaque Use of a Notification Service

If an IPP Printer does use some other notification service, it MAY do so in either of two ways:

1. The IPP Printer forwards the Subscriptions and the Events to the other notification service which then sends the Notifications to the proper Recipients.
2. The IPP Printer keeps the subscriptions and uses them to send Notifications to the other notification service which forwards them to Recipients that have also subscribed directly with the other notification service. Examples of this latter approach are paging and immediate messaging services.

In any case, the interface between the IPP Printer and the other notification service is outside the scope of this document and is intended to be transparent to this specification.

~~If "Explicit Subscription" is implemented, the IPP Printer MUST support three new Printer operations: Subscribe-Printer, Renew-Subscription, and Unsubscribe. These operations allow a client that is not submitting a job to subscribe, renew a subscription, and to unsubscribe independently from job submission. In addition, the Subscribe-Job operation permits a client to add a subscription to an already submitted job.~~

~~A REQUIRED operation attribute, "notify-lease-time", specifies the length of time in seconds that the subscription is to be in effect, after which the subscription is automatically canceled.~~

~~A REQUIRED operation attribute, "subscription-id", allows a client to maintain a reference to the applicable subscriptions made and know which notifications were generated as a result of this subscription.~~

~~The subscription created by a Subscribe-Job or Subscribe-Printer operation is called an "Explicit Subscription". Just like Job-Submission-Subscriptions, these subscriptions can include job and/or printer events. Subscriptions for Job-Events in Subscribe-Job operation apply to that job only, while Job-events in~~

371 ~~the Subscribe-Printer operation apply to all jobs. For the Subscribe-Printer subscriptions, it is most likely~~
372 ~~that the subscribing entity is either a server-based device management application submitting jobs to a~~
373 ~~device which has IPP embedded in it or an accounting application collecting accounting data.~~

374 3 Terminology

375 This section defines terminology used throughout this document.

376 3.1 Conformance Terminology

377 Capitalized terms, such as MUST, MUST NOT, REQUIRED, SHOULD, SHOULD NOT, MAY,
378 NEED NOT, and OPTIONAL, have special meaning relating to conformance to this specification.
379 These terms are defined in [ipp-mod section 13.1 on conformance terminology, most of which is
380 taken from RFC 2119 [RFC2119].

381 Since support of this entire notification specification is OPTIONAL for conformance to
382 IPP/1.0 or IPP/1.1, the use of the term REQUIRED in this document means
383 "REQUIRED if this notification specification is implemented". Likewise, the term
384 RECOMMENDED means "RECOMMENDED if this notification specification is
385 implemented".

386 READ-ONLY - indicates an attribute ~~the-that~~ MUST NOT be settable using the Set-Job-Attributes or
387 Set-Printer-Attributes operations (see [ipp-set2]).

388 3.2 Other terminology

389 **Job Submitting End User** - A human end user who submits a print job to an IPP Printer. This person
390 may or may not be within the same security domain as the Printer. This person may or may not be
391 geographically near the printer.

392 **Administrator** - A human user who established policy for and configures the print system.

393 **Operator** - A human user who carries out the policy established by the Administrator and controls the
394 day to day running of the print system.

395 **Job Submitting Application** - An application (for example, a batch application), acting on behalf of a
396 Job Submitting End User, which submits a print job to an IPP Printer. The application may or may
397 not be within the same security domain as the Printer. This application may or may not be
398 geographically near the printer.

399 **Security Domain** - The set of network components which can communicate without going through a
400 proxy or firewall. A security domain may be geographically very large, for example - anyplace
401 within IBM.COM.

402 **IPP Client (or client)** - The software component (desktop or server) that sends an IPP operation
403 request to an IPP Printer object (server or printing device) and accepts the resulting operation
404 response from the IPP Printer object.~~on the client system which implements the IPP protocol.~~

405 **Job Recipient** - A human who is the ultimate consumer of the print job. In many cases this will be the
406 same person as the Job Submitting End User, but need not be.

407 Example: If I use IPP to print a document on a printer in a business partner's office, I am the Job
408 Submitting End User, while the person I intend the document for in my business partner's office is
409 the Job Recipient. Since one of the goals of IPP is to be able to print near the Job Recipient of the
410 printed output, we would normally expect that person to be in the same security domain as, and

geographically near, the Printer. However, this may not always be the case. For example, I submit a print job across the Internet to a Kinko's print shop. I am both the Submitting End User and the Job Recipient, but I am neither near nor in the same security domain as the Printer.

Job Recipient Proxy - A human acting on behalf of the Job Recipient. In particular, the Job Recipient Proxy physically picks up the printed document from the Printer, if the Job Recipient cannot perform that function. The Proxy is by definition geographically near and in the same security domain as the printer.

Example: I submit a print job from home to be printed on a printer at work. I'd like my secretary to pick up the print job and put it on my desk. In this case, I am acting as both Job Submitting End User and Job Recipient. My secretary is acting as a Job Recipient Proxy

Notification Subscriber (or Subscriber) - A client that requests the IPP Printer to send Event Notifications to one or more Notification Recipients. A Notification Subscriber may be:

1. a Job Submitting End User or Job Submitting Application (desktop or server) that is submitting a job or
2. an End User, an Operator, or an Administrator that is not submitting a job.

Subscription - A request by a Notification Subscriber to the IPP Printer to send Event Notifications to a specified Notification Recipient when the event occur. A Subscription is represented as a The-set of attributes that indicate the "what, where, who, and how" for notification. Notifications are generated for certain events (what) and delivered using various delivery methods (how) to certain addresses (where and who).

Per-Job Submission-Subscription - A Subscription that a client specifies as part of a create job operation (Print-Job, Print-URI, Create-Job), or a and Validate-Job operation).

Explicit Per-Printer Subscription - A Subscription that a client specifies using an explicit operation, Subscribe-Job, Subscribe-Printer, Create-Printer-Subscription operation, that is attached to a Job or Printer object, respectively.

Notification Source - The entity that sends Event Notifications.

Notification Recipient - Any-The entity identified as a recipient within a subscription that receives IPP Notifications about Job and/or Printer events. Some-A Notification Recipients are-may be a: Job Submitting End User, s Job Submitting Application (desktop or server), Job Recipient, Job Recipient Proxy, Operator, or Administrator, etc., and their representative or log file or usage statistics gathering application or other active or passive entities. and others are interested third parties, such as the Job Recipient or Job Recipient Proxy.

Notification Recipient Agent - A program which receives Notifications on behalf of the Notification Recipient. The agent may take some action on behalf of the recipient, forward the notification to the recipient via some alternative means (for example, page the recipient), or queue the notification for later retrieval by the recipient.

Event - An event is some occurrence (either expected or unexpected) within the printing system of a change of state, condition, or configuration of a Job or Printer object. A property of an event is that it only occurs at one instant in time and does not span the time the physical event takes place. For instance, jam-occurred and jam-cleared are two distinct events. The jam-occurred event is reported only when the jam initially occurs. Each event is recorded internally when it occurs. In addition the event is reported externally and only if there is one or more event subscriptions outstanding for that event.

Events can be classified along two dimensions:

- Either as Job Events or Printer Events, and

457 - Either as Errors, Warnings, or Reports

458
459 A Job event is some interesting state change in the Job object, and a Printer event is some
460 interesting change in the Printer object.

461
462 A report event is purely informational, such as 'job-completed' or 'accepting-jobs'. A warning is not
463 serious and processing continues. An error is serious and either the job is aborted or the printer
464 stops. These are typical uses of the terms report, warning, and error, although the actual usage is
465 implementation dependent.

466
467 An event occurs for a job or printer whether any entity ~~is registered~~ has subscribed to be notified for
468 that event or not. ~~The most recent event(s) of all possible events are recorded in a job object and a~~
469 ~~printer object, and~~ A notification is only generated depending on the set of subscriptions
470 outstanding.

471
472 **Notification** - When an event occurs, a Notification is generated that fully describes the event (what
473 the event was, where it occurred, when it occurred, etc.). Notifications are delivered to each all the
474 Notification Recipients that has a subscription ~~are subscribed to~~ that includes the event, if any. The
475 Notification is delivered to the address of the Notification Recipient using the notification delivery
476 method defined in the subscription. However, a Notification is sent ONLY if there is a
477 corresponding subscription.

478 **Notification Delivery Method (or Delivery Method for short)** - Notifications are delivered using a
479 method, such as email, TCP/IP, etc.

480 **Immediate Notification** - Notifications that are delivered using a delivery method which is not store-
481 and-forward (e.g. TCP connection, UDP datagram). This can be on the order of several minutes
482 subject to network latency.

483 Store and Forward Queued Notification - A Notification which are not necessarily delivered to
484 Notification Recipients immediately, but is queued for delivery by some intermediate network
485 application, for later retrieval. Email is an example of a store and forward notification delivery
486 method. ~~Notifications that are delivered using a delivery method which has some sort of store and~~
487 ~~forward mechanism (e.g., email).~~

488 **Human Consumable Notification** - Notifications that are intended to be consumed by human End
489 Users only. ~~(Further define)~~ They are simple text that has been localized for the Notification
490 Recipient as specified in the subscription. Programs are not intended to parse Human Consumable
491 Notification, since it is localized and the content depends on implementation. There is no
492 standardized format.

493 **Machine Consumable Notification** - Notifications that are intended for consumption by a program
494 only. ~~(Further define)~~ They use the encoding of an IPP response. The Notification Recipient must
495 localize the contents, if displaying it to a human.

496 ~~**Mixed Format Notification** - A mixed notification may contain both human consumable and machine~~
497 ~~consumable information.~~

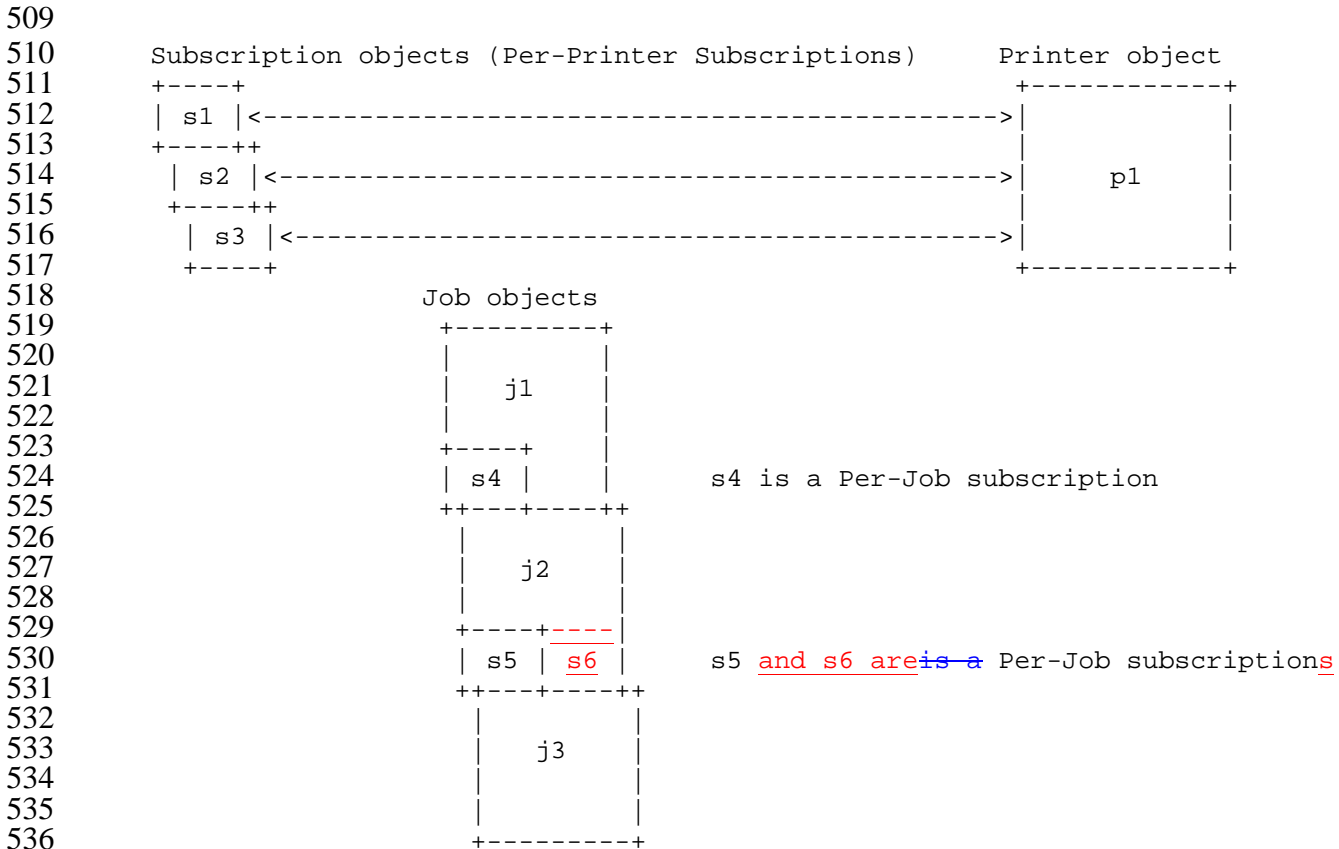
498 4 Object Model for Notification

499 This section describes the notification object model that adds a **REQUIRED** Subscription object which
500 together with the Job and Printer object provide the complete notification semantics. ~~The Subscription~~

501 ~~object is OPTIONAL. The Subscription object MUST be supported if Per-Printer subscriptions are~~
502 ~~supported and vice-versa.~~

503 Per-Job subscriptions do not use the Subscription object. Instead, a Job can have one or more Per-Job
504 subscription which is represented entirely as a single Job attributes. Each Per-Job subscription is
505 represented as a collection value of the "job-notify" Job attribute. ~~A "notify-event-exclude-mask" attribute~~
506 ~~allows some of the specified events to be excluded from some of the specified Notification Recipients in~~
507 ~~the Job subscription.~~

508 The object relationships can be seen pictorially as:



537 s1, s2, and s3 are Per-Printer Subscription objects and can identify Printer and/or Job events.

538 s4, s5, and s6 are Per-Job subscriptions (not objects) and can identify Printer and/or Job events.

539 4.1 Object relationships

540 The object relationships can be stated as follows:

- 541 1. The Printer object contains zero or more Subscription objects (p1 contains s1-s3 Subscription
542 objects).
- 543 2. Each Subscription object (s1, s2, and s3) is contained in one Printer object (p1) and represents one
544 Per-Printer subscription.

- 545 3. Each "Per-Printer" Subscription object identifies one or more Job and/or Printer events. Such Job
546 events are for *all* jobs on the Printer. Such Printer events are for *any* Printer event, no matter which
547 job is processing and when no jobs are processing.
- 548 4. ~~Each~~The "Per-Job" subscription (not an object by itself, but is attributes of the Job object) identifies
549 one or more Job and/or Printer events. Such Job events are only for *this* job (different than "per-
550 Printer" Subscriptions). Such Printer events are for *any* Printer event, no matter which job and
551 when no jobs are processing (same as for "per-Printer" Subscriptions).
- 552 5. A Job object contains zero or ~~more~~one Per-Job subscriptions (not an object). Job j1 contains Per-
553 Job subscription s4, Job j2 contains Per-Job subscription s5 and s6, and Job j3 does not contain a
554 Per-Job subscription.
- 555 6. A Subscription object cannot be contained in or associated with more than one Printer object.
- 556 7. A Per-Job subscription cannot be contained in or associated with more than one Job object.

557 5 Object attributes defined for Notification

558 The following notification attributes are defined for each of the Printer, Job, and ~~(new, but OPTIONAL)~~
559 Subscription objects. The ~~explanations about some of~~ definitions of the object attributes are ~~collected~~
560 specified here so that they can be referred to from the subsequence definitions of the operations that set
561 them. ~~All Job, Printer, and Subscription object attributes are READ-ONLY, i.e., they MUST NOT be~~
562 ~~settable with the Set-Job-Attributes or Set-Printer-Attributes operations. Instead, all of them are set as a~~
563 ~~side effect of another operation or when an event notification is delivered. Attributes and objects not in the~~
564 ~~current, July 22, spec are labeled as "new":~~

565 5.1 "job-notify" (1setOf collection) Job Description attribute

566 In order to permit more than one Per-Job subscription, each subscription is represented as a collection value
567 of the "job-notify (1setOf collection)" Job Description attribute. An implementation MUST support at least
568 one collection value of the "job-notify" attribute. Table 3 lists the member attributes of the "job-notify"
569 attribute. Section 5.3 defines each of the "job-notify" member attributes.

570 The "job-notify" Job Description attribute MAY be modified by the Set-Job-Attributes operation (see
571 section 7.4) in which case all of its member attributes are replaced and the READ-ONLY "request-id"
572 member attribute is reset with a value of '0' (see section 5.3.7).

573

Table 3 - Job object 'job-notify' collection member attributes

Job object attributes:	Printer support	READ-ONLY , set by:
notify-recipients (1setOf uri)	R	job creation operation, <u>Set-Job-Attributes</u>
notify-events (1setOf type2 keyword)	R	job creation operation, <u>Set-Job-Attributes</u>
<u>notify-content-type (mimeMediaType)</u>	<u>R</u>	<u>job creation operation,</u> <u>Set-Job-Attributes</u>
<u>notifysubscriber</u> -user-data (octetString(63))	R	job creation operation, <u>Set-Job-Attributes</u>
notify-exclude-event-masks (1setOf octetString(8))	R	job creation operation
<u>notify-charset (charset)</u>	<u>O</u>	<u>job creation operation,</u> <u>Set-Job-Attributes</u>
notify-natural-languages" (1setOf naturalLanguage)	O	job creation operation, <u>Set-Job-Attributes</u>

574

<u>request-id (integer(0:MAX))</u>	<u>R</u>	<u>Printer - event occurring</u>
job-trigger-event (type2 keyword)	R	Printer - event occurring
job-trigger-time (integer(MIN:MAX))	R	Printer - event occurring
job-trigger-date-time (dateTime)	O	Printer - event occurring
notify-request-ids (1setOf integer(0:MAX))	R	Printer - event occurring

575

576 5.2 Subscription object attributes

577 Each Per-Printer subscription is contained in a separate Subscription object. An implementation MUST
 578 support at least one Subscription object instance. Table 4 lists the Subscription attributes defined for the
 579 Subscription object. Sections 5.3 and 5.4 define each of the Subscription attributes.

580 All of the Subscription object attributes are READ-ONLY. They are set by other operations.

581

Table 4 - Subscription object attributes

Subscription object attributes:	Printer support	READ-ONLY, set by:
notify-recipients (1setOf uri)	R <u>C</u>	client - Create-Printer-Subscription
notify-events (1setOf type2 keyword)	R <u>C</u>	client - Create-Printer-Subscription
<u>notify-content-type (mimeMediaType)</u>	<u>R</u>	<u>client - Create-Printer-Subscription</u>
subscriber notify-user-data (octetString(63))	R <u>C</u>	client - Create-Printer-Subscription
notify-exclude-event-mask (1setOf octetString(8))	C	client - Create-Printer-Subscription
<u>notify-charset (charset)</u>	<u>O</u>	<u>client - Create-Printer-Subscription</u>
notify-natural-languages (1setOf naturalLanguage)	O	client - Create-Printer-Subscription

582

notify-request-id (1setOf integer(0:MAX))	R <u>C</u>	Printer - event occurring
delivery-failure-count (integer(0:MAX))	C	Printer - event occurring

583

584

Not in a Per-Job subscription:

subscription-id (integer(1:MAX))	<u>R</u> <u>C</u>	Printer - Create-Printer-Subscription
notify-lease- expiration -time (integer(0:MAX))	<u>R</u> <u>C</u>	Printer - Create-Printer-Subscription, <u>Renew-Printer-Subscription</u>
<u>printer-uri (uri)</u>	<u>R</u>	<u>Printer - Create-Printer-Subscription</u>
<u>subscriber-user-name (name(MAX))</u>	<u>R</u> <u>C</u>	<u>Printer - Create-Printer-Subscription</u>

585

<u>notify-printer-up-time (integer(1:MAX))</u>	<u>R</u>	<u>Printer - returned by Get-Printer-Subscription-Attributes and Get-Printer-Subscriptions</u>
--	----------	--

586

587

~~ISSUE 4 - It isn't necessary to add a "persistence (boolean)" attribute to the Subscription object in order to record the value passed in the Create-Printer-Subscription operation and to allow it to be queried?~~

588

5.3 Common Per-Job and Per-Printer Subscription attributes

589

590

591

592

The following sub-sections define attributes that are in common to both Per-Job and Per-Printer subscriptions, i.e., are member attributes of the "job-notify" collection Job Description attribute and are Subscription object attributes. Section 5.4 defines additional attributes that are only Subscription object attributes.

593

5.2.15.3.1 notify-recipients (1setOf uri)

594

595

~~The client supplies this operation attribute in a create request in order to subscribe for job and/or printer events while this job is "not-completed". In order to claim conformance to this notification specification,~~

596 ~~the Printer object MUST support this attribute.~~ This **REQUIRED** attribute describes both where (the
597 address of the Notification Recipients) and how (the delivery method) notifications are to be delivered **to**
598 **the Notification Recipient** when any of the events specified in the "notify-events" attribute occur. ~~If the~~
599 ~~client does not supply this attribute in a create request, the Printer object MUST NOT provide any Job~~
600 ~~Submission Subscription notification for this job.~~

601 There are potentially many different notification delivery methods for IPP notifications, standardized as
602 well as proprietary. This document does not define any of these delivery mechanisms; they will each be
603 described in separate complementary documents.

604 Each of the notification delivery method documents must provide at least the following information:

- 605 1) The URI scheme used.
- 606 2) The supported and default delivery format, and if not one of the specified types in Section 5.3.3,
607 description of the notification content.
- 608 3) Any content length restrictions imposed by the delivery protocol.
- 609 4) The latency of the delivery protocol used.
- 610 5) The reliability of the transport and delivery protocol used.
- 611 6) The security aspects of the transport and delivery protocol used, e.g. how it is handled in firewalls.
- 612 7) How the delivery protocol is initiated, e.g. does it have to be initiated by the receiving user (pull), or
613 is it initiated by the notification service (push).

614 **ISSUE 1: Once a number of delivery solutions have been developed and evaluated, we may want to make**
615 **one or several of them REQUIRED for implementation to ensure a minimum set of interoperability. Which**
616 **one or ones should be REQUIRED?**

617 ~~Unless specified otherwise, a delivery method may be used with any event and an even may be used with~~
618 ~~any delivery method.~~

619 ~~ISSUE 2: Delete previous sentence that says that some delivery methods can defined to not use some~~
620 ~~events?~~

621 ~~IPP Printer objects MUST support the 'ipp-tcp-notify' and 'ipp-udp-notify' delivery methods in order to~~
622 ~~conform to this notification specification. Support of the other methods is OPTIONAL.~~

623 ~~ISSUE 1—Which delivery method or methods is/are REQUIRED?~~

624 ~~Standard uriScheme values are:~~

625 ~~'mailto': a 'multipart/report' [RFC1892] message is sent via email to the specified email address. It~~
626 ~~MUST consist of both a "text/plain" part for display to a user and an 'application/ipp' part which is a~~
627 ~~notification that a program can process (see Section 1). This delivery method ignores the supplied~~
628 ~~values of the "notify-events" attribute and implies the 'job-completed' event (new state is~~
629 ~~'completed', 'aborted', or 'canceled'). The notification recipient does not acknowledge receipt of the~~
630 ~~mail message.~~

631 ~~'http': an IPP notification is sent using an HTTP POST to the indicated URL.~~

632
633

~~'ipp-**tcp-notify**': (REQUIRED) an IPP notification is sent via a TCP/IP socket that is opened by the Printer object on the IP address specified in the URI using the specified port using the "host:port" HTTP convention. For example:~~

~~ipp-**tcp-notify**://foo.com:6000~~

~~If the port is omitted, the default port is TBD. The "application/ipp" notification content format is used for this method (see Section 6.1).~~

~~The event recipient does not respond or acknowledge the notification.~~

~~ISSUE 3: For TCP/IP delivery, what about leaving the connection open versus having to reestablish a connection for each event? Who specifies: client in subscription, Printer implementation, Notification Recipient, Administrator?~~

~~'**snmpv1-notify**': a notification is sent as an SNMPv1 trap to the host specified as the address in the URI. The notification recipient does not acknowledge receipt of the notification (trap).~~

~~'**snmpv2-notify**': a notification is sent as an SNMPv2 inform to the host specified as the address in the URI. The notification recipient does acknowledge receipt of the notification (inform).~~

~~'**snmpv3-notify**': a notification is sent as an SNMPv3 inform to the host specified as the address in the URI. The notification recipient does acknowledge receipt of the notification (inform).~~

~~ISSUE 4: Move SNMP trap delivery methods to another document? Which one?~~

~~'ipp-**udp-notify**': (REQUIRED) an IPP notification is sent via a UDP datagram that is opened by the Printer object on the IP address specified in the URI using the specified port using the "host:port" HTTP convention. For example:~~

~~ipp-**udp-notify**://bar.com:6000~~

~~If the port is omitted, the default port is TBD (see). The UDP datagram contains the "application/ipp" notification content format (see Section 1). The notification recipient does not acknowledge receipt of the notification.~~

~~If the client specifies a "notify-recipients" URI scheme that is not supported by the printer, the Printer MUST return the [new] 'client_error_notify_uri_scheme_not_supported' in the IPP response in reply to the create request.~~

~~ISSUE 5: Which URL parameters should we mention (which like SLP) are removed before being used?~~

5.3.2 notify-events (1setOf type2 keyword)

~~The client OPTIONALLY supplies this operation attribute in a create request. In order to claim conformance to this notification specification, the Printer object MUST support this attribute. This **REQUIRED** attribute identifies the job and/or printer events that are to be delivered to the Notification Recipients as Notifications as defined in section 6. If the client does-did not supply this attribute in a create request when supplying the subscription, but does supply the "notify-recipients", the Printer object populates this attribute with its "notify-events-default" attribute value (see section 5.5.2).~~

~~There are both job events and printer events. Each job and printer event is assigned a keyword to use in this attribute and in the Notification.~~

~~The following events are defined to be disjoint. Therefore, the "job-trigger-event" attribute is single valued, since two events cannot be sent in the same notification content.~~

678 A Printer MUST support the events indicated as "REQUIRED".

679 The standard job event keyword values are:

680 **'none'**: REQUIRED - no notifications of any events (an IPP object can use this value to indicate that it
681 is configured not to support event notification; a client would not subscribe to this event).

682 **'job-created'**: REQUIRED - the Printer object has accepted ~~the create~~ a job creation operation (Print-
683 Job, Print-URI, or Create-Job) and the job's "job-time-at-creation" attribute value is set (see [ipp-
684 mod] section 4.3.14.1). ~~(i.e., when the job is created no matter whether it puts~~ The Printer puts the
685 job in the 'pending', ~~or~~ 'pending-held' or 'processing' states). ~~The IPP Printer MUST record this~~
686 ~~event.~~

687 Note: This event is separate from the 'job-state-changed' event so that it can be subscribed to
688 without having to get every job state change event; for a Notification Recipient that is only
689 interested in when the job is first created.

690 **'job-completed'**: REQUIRED - the job has reached one of the completed states, i.e., the value of the
691 job's "job-state" attribute has changed to: 'completed', 'aborted', or 'canceled'. The Job's "time-at-
692 completed" and ~~or~~ "date-time-at-completed" (if supported) attributes are set (see [ipp-mod] section
693 4.3.14). ~~The IPP Printer MUST record this event.~~

694 Note: This event is separate from 'job-state-changed' so that it can be subscribed to without having
695 to get every job state change event; for a Notification Recipient that is only interested in when the
696 job is completed.

697
698 ~~ISSUE 19 - Should there be more job attributes in the 'job-completed' notification content, such as~~
699 ~~"impressions-completed" and "sheets-completed"?~~

700
701 **'job-state-changed'**: REQUIRED - the job has changed from any state ~~or state reason~~ to any other
702 state and/or a value has been added or removed from the job's "job-state-reasons" attribute, except
703 when the job is created or when the job moves to any of the "completed" job states, ~~i.e., the value~~
704 of the job's "job-state" attribute changes to any value, except ('completed', 'aborted', or 'canceled').
705

706 This event also indicates that one or more values have been added to or removed from the Job's
707 "job-state-reasons" attribute, such as 'job-queued' or 'job-printing', whether or not the job's state has
708 changed. If job state reasons are added when the job is created, only the 'job-created' event is
709 generated, in order to keep the events disjoint. If job state reasons are added or removed when the
710 job is completed, only the 'job-completed' event is generated, in order to keep the events disjoint.
711 ~~This event is REQUIRED to be recorded if the job state reason is an error.~~

712
713 A client that wants to subscribe to all job state changes, including creation and completion, includes
714 the 'job-created', 'job-state-changed', and 'job-completed' in the notification subscription. When a
715 job is finally removed from the Job History (see [ipp-mod] 4.3.7.1) no event is generated, i.e.,
716 neither a 'job-state-changed' event nor a 'job-purged' event is generated.

717 ~~ISSUE 20 - Should 'job-state-changed' event be REQUIRED to support, since 'printer state-~~
718 ~~changed' is?~~

719 **'job-config-changed'**: OPTIONAL - when the configuration of a job has changed, i.e., the value of
720 the "job-message-from-operator" or any of the non-READ-ONLY Job attributes have changed, such
721 as any of the job template attributes or the "job-name" attribute. Typically, such a change is the
722 result of the user or the operator performing a Set-Job-Attributes operation (see [ipp-set2]) on the

723 Job object. The client ~~would have to~~ performs a Get-Job-Attributes to find out the new values of
724 the changed attributes. This event ~~would be~~ is useful for GUI clients and drivers to update the job
725 information to the user.

726 **'job-purged':** OPTIONAL - when a 'not-completed' job (i.e., not 'completed', 'canceled', or 'aborted')
727 was purged from the printer using the Purge-Jobs operation. No event, including this event, is
728 generated when a job is aged out of the Job History or moved out explicitly with the Purge-Jobs
729 operation.

730 **'job-progress'** - a sheet or copy has completed. See separate [ipp-prog] spec.

731 ~~ISSUE 21—any other job events to be defined and added?~~

732 ~~ISSUE 22—should any more events be REQUIRED to be supported?~~

733
734 The standard Printer-report event keywords values are include:

735 **'none':** - REQUIRED - no notification of any events (an IPP object can use this value to indicate that it
736 is configured not to support event notification; a client would not subscribe to this event).

737 **'printer-restarted':** OPTIONAL - when the printer is powered up or the Restart-Printer operation is
738 performed (see [ipp-set2adm]). The IPP Printer MUST record this event.

739 Note: This event is separate from the 'printer-state-changed' event so that it can be subscribed to
740 without having to get every printer state change event, for a Notification Recipient that is only
741 interested in when the Printer first comes up.

742 **'printer-shutdown':** OPTIONAL - when the device is being powered down or the Shutdown-Printer
743 operation has been performed with either power-off or standby options (see [ipp-set2adm]).

744 Note: This event is separate from 'printer-state-changed' so that it can be subscribed to without
745 having to get every Printer state change event, for a Notification Recipient that is only interested in
746 when the Printer is powered down or shutdown.

747 **'printer-state-changed':** - REQUIRED - the Printer changed state, i.e., the value of the Printer's
748 "printer-state", "printer-state-reasons" (whether "printer-state" changed or not), and/or "printer-is-
749 accepting-jobs" attributes changed, except when the Printer starts up or is shutdown. ~~If the "printer-
750 state-reasons" changed, then one or more values have been added to or removed from the Printer's
751 "printer-state-reasons" attribute, such as 'moving to paused' or 'connecting to printer'.~~

752
753 ~~This event also indicates that one or more values have been added to or removed from the Printer's
754 "printer-state-reasons" attribute, such as 'moving to paused', 'toner low', or 'media jam', whether or
755 not the Printer's state has changed.~~ If printer state reasons are added when the Printer is started up,
756 only the 'printer-restarted' event is generated, in order to keep the events disjoint. If printer state
757 reasons are added or removed when the printer is powered-down or shutdown, only the 'printer-
758 shutdown' event is generated, in order to keep the events disjoint. ~~This event is REQUIRED to be
759 recorded if the printer-state-reason is an error.~~

760
761 A client that wants to subscribe to all printer state changes, including restart and power-
762 down/shutdown, includes the 'printer-restarted', 'printer-state-changed', and 'printer-shutdown' in the
763 notification subscription.

764 **'printer-media-changed':** OPTIONAL - when the media loaded on a printer has been changed, i.e.,
765 the "media-ready" attribute has changed. This event includes both an actual media change and
766 filling an empty input tray with the same or different media. The client must check the "media-
767 ready" Printer attribute (see [ipp-mod] section 4.2.11) separately to find out what new media was
768 loaded or filled.

769 **'printer-config-changed':** OPTIONAL – when the configuration of a Printer has changed, i.e., the
 770 value of the "printer-message-from-operator" or any non-READ-ONLY Printer attribute has
 771 changed, except for "media-ready" (which has its own event), whether through the Set-Printer-
 772 Attributes operation or by other means and whether initiated by a human or not. For example, any
 773 "xxx-supported", "xxx-default", "printer-message-from-operator", etc. values have changed. The
 774 client ~~would have to~~ has to perform a Get-Printer-Attributes to find out the new values of these
 775 changed attributes. This event ~~would be~~ is useful for GUI clients and drivers to update the available
 776 printer capabilities to the user.

777 **'printer-queue-changed':** OPTIONAL - the order of jobs in the Printer's queue has changed, so that an
 778 application that is monitoring the queue can perform a Get-Jobs operation to determine the new
 779 order. This event does not include when a job enters the queue (the 'job-created' event covers that)
 780 and does not include when a job leaves the queue (the 'job-completed' event covers that).

781 **'printer-no-longer-full':** OPTIONAL – when the Printer can now accept a Print-Job, Print-URI,
 782 Create-Job, Send-Document, or Send-URI request. This event is used when there is more than one
 783 client feeding a printer/server (fan-in), and the Printer may still be printing but has acquired more
 784 buffer space to accept jobs. This event only occurs when the Printer did not have room to accept
 785 jobs previously and rejected a Print-Job, Print-URI, Create-Job, Send-Document, or Send-URI
 786 operation.

787 **'printer-almost-idle':** OPTIONAL – when the Printer needs another Job in order to stay busy. This
 788 event is used when a spooler is feeding more than one printer/server (fan-out), and the spooler holds
 789 jobs until a Printer requests them, rather than committing jobs to IPP Printers before it is necessary.
 790 This event MAY be used byfor a Printer implementation to request a new job from any subscribers
 791 sufficiently ahead of time so that the device does not run out of work between jobs.

793 5.3.3 notify-content-type (mimeMediaType)

794 This REQUIRED attribute specifies the type of content that is to be sent in the notifications. Thus the
 795 client-subscriber can control whether the event notification content is Human Readable or, Machine
 796 Readable, or both. Most delivery methods support both forms of content type and MUST define one of
 797 them as the default. If a delivery method only supports one form of content type, then that form is also the
 798 default.

799 If the MIME media type registration permits a charset parameter, than such a specification SHALL-MUST
 800 be used (instead of the "notify-charset" member attribute) in order to indicate the charset to be used in the
 801 notification content.

802 If the Subscriber did not supply this attribute when requesting the subscription, the Printer object populates
 803 this attribute from the default value defined for the delivery method.

804 Standard mimeMediaType values are:

805 ~~'multi-part/alternative'—contains both human consumable notification content using the 'text/plain'~~
 806 ~~MIME media type and machine consumable notification content using the 'application/ipp'~~
 807 ~~MIME media type with the Get Job Attributes response encoding of the attributes listed in~~
 808 ~~Table 3 or the Get Printer Attributes response encoding of the attributed listed in Table 4.~~
 809 ~~This value SHALL be supported and is the default, if the client does not supply the "notify-~~
 810 ~~content-type" member attribute.~~

~~ISSUE 15: Should we make this attribute 1setOf so that the additional values could specify which alternatives are to be used with 'multi-part/alternative'?~~

~~'application/ipp' - the Machine Consumable notification content using the 'application/ipp' MIME media type [ipp-mod] as defined in section 6 with the Get Job Attributes response encoding of the attributes listed in or the Get Printer Attributes response encoding of the attributes listed in.~~

~~'text/plain' the Human Consumable notification content. If the charset is other than US-ASCII, the /charset parameter SHALL be included in the value of this attribute and in the event notification content. RFC 2046 indicates that the absence of the charset parameter SHALL mean US-ASCII rather than simply unspecified [RFC2046]. Examples:~~
~~'text/plain': A plain text document in US-ASCII [US-ASCII]~~
~~'text/plain; charset=US-ASCII': A plain text document in US-ASCII.~~
~~'text/plain; charset=ISO-8859-1': A plain text document in ISO-8859-1 (Latin 1) [ISO8859-1].~~
~~'text/plain; charset=utf-8': A plain text document in ISO 10646 represented as UTF-8 [RFC-2044] as defined in section 6.~~

~~'text/plain; charset=iso-10646-ucs-2': A plain text document in ISO-10646 represented in two octets (UCS-2) [ISO10646-1]~~

5.3.4 subscriber-notify-user-data (octetString(63))

~~ISSUE 6: Should we add a third operation attribute to Job Submission Subscriptions, Subscribe Job, and Subscript Printer that is an opaque octet string that is passed to the Notification Recipient on every notification, as in Jini? This operation attribute would be OPTIONAL for the client to supply and the Printer to support.~~

~~This REQUIRED attribute holds opaque information being sent from the Subscriber to the Notification Recipient(s), such as the identify of the Subscriber or a path or index to some Subscriber information. Or it MAY contain a key that the Notification Recipient needs in order to process the Notification, such as the ultimate recipient, if the Notification Recipient is a general application that in turn forwards notifications. This information is the same for all Notification Recipients. Per Notification Recipient data should be specified in the URL registration so that they may be sent as parameters in each URL.~~

5.3.5 notify-attributes-charset (charset)

~~This OPTIONAL attribute specifies the charset to be used in the human readable part of the Notification content that is sent to the notification recipients that the client supplied in this same collection value. This attribute SHALL MUST NOT be used when the "notify-content-type" attribute value specifies the charset parameter in its MIME media type value.~~

~~If the "notify-attributes-charset" attribute is not supplied, the charset supplied in the "attributes-charset" Operation attribute SHALL be used, if the charset value is supported by the Printer, else the Printer object SHALL use the Printer's "charset-configured" value.~~

5.3.6 notify-attributes-natural-languages (naturalLanguage)

~~This OPTIONAL attribute specifies the natural language for the IPP object to use in the human readable part of the Notification content that is sent to the Notification Recipients that the client supplied in this same collection value. If this attribute is not supported or the supplied value is not supported, the IPP~~

853 ~~Printer SHALL return the attribute in the Unsupported Attributes Group but still accept the operation, as~~
854 ~~with all create operations. If this attribute is not supplied or the attribute or value is not supported by the~~
855 ~~Printer object, the natural language supplied in the "attributes-natural-language" create-operation-attribute~~
856 ~~SHALL be used, if that natural language value is supported by the Printer, else the Printer object SHALL~~
857 ~~use the Printer's "natural-language-configured" value. See the Print-Job operation in [ipp-model].~~

858 **5.3.7 request-id**

859 This REQUIRED READ-ONLY attribute holds the most recent request-ids **sequence number** delivered in a
860 Job-Notification content **to the Notification Recipient.** ~~for a Per-Job Subscription for this Job for each of~~
861 ~~the Job's Notification Recipients. In other words, the "notify-request-ids" is a parallel attribute to the Job's~~
862 ~~"notify-recipients (1setOf-uri) attribute. A value of 0 indicates that no Notifications have been sent for this~~
863 ~~subscriptionJob. The first request-id sent for a **job-subscription** MUST be 1. The reason to have a separate~~
864 ~~request-id for each recipient is so that when more than one Notification Recipient is specified in a~~
865 ~~subscription, Each **Notification** Recipient **will have**has its own monotonically increasing **series**set of~~
866 ~~request-ids, i.e., no gaps, in order to be able to detect a missing notification.~~

867 For a Per-Job subscription, "request-id" is a READ-ONLY member attribute of each collection value. All
868 of the other member attributes (see section 5.1) are not READ-ONLY and MAY be modified by a Set-Job-
869 Attributes operation (see 7.4).

870 **5.4 Additional attributes for the Subscription object only**

871 The following sub-sections define additional attributes that are only for the Subscription object and have no
872 counter part in Per-Job subscriptions.

873 **5.4.1 subscription-id (integer (1:MAX))**

874 This REQUIRED READ-ONLY Subscription object attribute uniquely identifies this Subscription object
875 instance on this Printer. The Printer object, on acceptance of a Create-Printer-Subscription request,
876 generates an ID which identifies the new Subscription object on that Printer. The Printer returns the value
877 of the "subscription-id" attribute as part of the response to a Create-Printer-Subscription request. The 0
878 value is not included to allow for compatibility with "job-id" and with SNMP index values which also
879 cannot be 0.

880 It is RECOMMENDED that Per-Printer Subscription objects be persistent. Then the Subscription objects
881 including the subscription-id remains unique across power-cycles. Even if an implementation does not
882 make Per-Printer subscription objects persist, the implementation SHOULD make every attempt not to re-
883 use subscription ids that subscribers might still think are valid. In other words, the Printer SHOULD at
884 least keep the next subscription-id to be assigned in non-volatile memory.

885 **5.4.2 notify-lease-expiration-time (integer(0:MAX))**

886 This REQUIRED READ-ONLY Subscription object attribute specifies the time in the future when the
887 subscription lease will expire, i.e., the "printer-up-time" value at which the lease will expire. When the
888 Printer object creates a Subscription object, it populates this attribute with the appropriate value. When the
889 indicated time arrives, the Printer MUST delete the Per-Printer Subscription object.

890 A client is able to extend a lease using the Renew-Printer-Subscription operation (see section 8.4). A value
891 of 0 indicates an infinite time, if such a policy is supported as indicated in the "notify-lease-time-supported"

892 (integer(0:MAX)) Printer Description attribute (see section 5.5.7) and the subscriber is authorized to
893 request an infinite lease.

894 Note: In order to compute the number of seconds remaining in a Per-Printer Subscription lease, a client can
895 subtract the "notify-printer-up-time" Printer object attribute ([see section 5.4.5](#)) from the "notify-lease-time"
896 Subscription object attribute.

897 **5.4.3 printer-uri (uri)**

898 This REQUIRED READ-ONLY Subscription object attribute identifies the Printer object that created this
899 Subscription object. When a Printer object creates a Subscription object, it populates this attribute with the
900 Printer object URI that was used in the create request. This attribute permits a client to identify the Printer
901 object URI that was used to create this Subscription object, i.e., what security scheme was used.

902 **5.4.4 subscriber-user-name (name(MAX))**

903 This REQUIRED READ-ONLY Subscription object attribute contains the name of the user that created the
904 Subscription object. The Printer object sets this attribute to the most authenticated printable name that it
905 can obtain from the authentication service over which the IPP operation was received. This attribute is
906 intended to help a human user determine for which Per-Printer Subscriptions they are the Subscriber. Only
907 if such is not available, does the Printer object use the value supplied by the client in the "requesting-user-
908 name" operation attribute of the create operation (see [IPP-MOD] Sections 4.4.2, 4.4.3, and 8).

909 **ISSUE 2 - What is the value of the "subscriber-user-name" when the Subscriber is a server send a job to an**
910 **IPP Printer? The original Job Submitting End User use name or some "user name" that identifies the**
911 **Server?**

912 Note: The Printer object needs to keep an internal originating user id of some form, typically as a
913 credential of a principal, with the Subscription object. Since such an internal attribute is implementation-
914 dependent and not of interest to clients, it is not specified as a Subscription Description attribute. This
915 originating user id is used for authorization checks (if any) on all subsequent operations.

916 **5.4.5 notify-printer-up-time (integer(1:MAX))**

917 ~~ISSUE 6—Should we provide a way for the client to get the "printer-up-time" in a Get-Printer-~~
918 ~~Subscriptions operation, so that the client doesn't have to make two requests?~~

919 This REQUIRED READ-ONLY Subscription object attribute indicates the amount of time (in seconds)
920 that the Printer implementation has been up and running. This attribute is an alias for the Printer's "printer-
921 up-time" attribute" (see [ipp-mod] section 4.4.29), in an analogous way that the Job's "job-printer-up-time"
922 is an alias for "printer-up-time" (see [ipp-mod] section 4.3.13.4).

923 Note: A client can request this attribute in a Get-Printer-Subscription-Attributes or Get-Printer-
924 Subscriptions request and use the value returned in combination with the "notify-subscription-expiration-
925 time" (see section 5.4.2) in order to display wall clock time equivalent to the user. The difference between
926 this attribute and the 'integer' value of the "notify-subscription-expiration-time" attribute is the number of
927 seconds in the future that the subscription will expire. A client can compute the wall-clock time at which
928 the subscription will expire by adding this difference to the client's wall-clock time.

929 **5.5 Printer Description Attributes related to Notification**

930 This section defines the Printer Description attributes that are related to Notification.

931

Table 5 - Printer Description attributes associated with Notification

Printer object attributes:	Printer support	READ-ONLY, set by:
notify-schemes-supported (1setOf uriScheme)	R	Administrator/implementation
notify-content-types-supported (1setOf collection)	R	Administrator/implementation
notify-events-default (1setOf type2 keyword)	R	Administrator/implementation
notify-events-supported (1setOf type2 keyword)	R	Administrator/implementation
max-events-supported (integer(5:MAX))	R	Administrator/implementation
max-job-subscriptions-supported (integer(1:MAX))	R	Administrator/implementation
max-printer-subscriptions-supported (integer(0:MAX))	R E	Administrator/implementation
notify-lease-time-supported (rangeOfInteger(0:MAX))	R E	Administrator/implementation
notify-lease-time-default (integer(0:MAX))	R E	Administrator/implementation
persistent-jobs-supported (boolean)	O	Administrator/implementation
persistent-subscriptions-supported (boolean)	O	Administrator/implementation
printer-state-change-time (integer(1:MAX))	O	Administrator/implementation
printer-state-change-date-time (dateTime)	O	Administrator/implementation

932

933 5.5.1 notify-schemes-supported (1setOf uriScheme)

934 This REQUIRED **Printer** attribute describes the notification delivery methods supported by this Printer
 935 object. Standard values are defined in Section 5.3.1).

936 5.5.2 notify-events-default (1setOf type2 keyword)

937 This REQUIRED **Printer** attribute identifies the event values if the client does not supply the "notify-
 938 events" operation attribute in either a Job creation request or the Create-Printer-Subscription request. ~~All~~
 939 ~~the-Any~~ values in this attribute MUST also appear in the notify-events-supported attribute, i.e., be a
 940 supported event.

941 5.5.3 notify-events-supported (1setOf type2 keyword)

942 This REQUIRED **Printer** attribute identifies the events supported by this Printer object for both Per-Job and
 943 Per-Printer subscriptions which MUST be the same. ~~In order to claim conformance to this notification~~
 944 ~~specification, the Printer object MUST support this Printer Description attribute.~~ Standard values are
 945 defined in Section 1.1.1.

946 5.5.4 max-events-supported (integer(5:MAX))

947 This REQUIRED **Printer** attribute specifies the maximum number of events that are supported in a single
 948 Per-Job or Per-Printer subscription which must be the same. A Printer MUST support at least 5 events per
 949 subscription, so that clients can depend on at least 5 events in a single subscription. If the number of events
 950 supplied by a client in a subscription exceed this number, the Printer rejects the request and returns the
 951 'server-error-too-many-events (see section 14.3). If notification is not supported, this attribute MUST NOT
 952 be supported.

953 **5.5.5 max-job-subscriptions-supported (integer(1:MAX))**

954 This REQUIRED Printer attribute specifies the maximum number of Per-Job subscriptions that are
955 supported in a single Job Creation request, i.e., the maximum number of collection values for the "job-
956 notify" operation attribute. A value of 0 indicates no effective maximum. A Printer MUST support at least
957 1 Per-Job subscription. If the number of Per-Job subscriptions supplied by a client in a Job Creation
958 request exceed this number, the Printer rejects the request and returns the 'server-error-too-many-
959 subscriptions' (see section 14.2).

960 **5.5.6 max-printer-subscriptions-supported (integer(0:MAX))**

961 This REQUIRED Printer attribute specifies the maximum number of Per-Printer subscriptions that are
962 supported by multiple Create-Printer-Subscription requests, i.e., the maximum number of un-expired
963 Subscription objects that the Printer supports at a time. A value of 0 indicates no effective maximum. A
964 Printer MUST support at least 1 Per-Printer subscription. If the number of Per-Printer subscriptions would
965 exceed this number, the Printer rejects the Create-Printer-Subscription request and returns the 'server-error-
966 too-many-subscriptions' (see section 14.2).

967 **5.5.7 notify-lease-time-supported (rangeOfInteger(0:MAX))**

968 This REQUIRED Printer attribute specifies the range of values in seconds that are supported for the
969 "notify-lease-time-requested" operation attribute in a Create-Printer-Subscription or Renew-Printer-
970 Subscription request. When the lease time expires for a Per-Printer Subscription without renewing, the
971 Printer MUST delete the Subscription object. If the client requests a value outside this range, the Printer
972 MUST grant a value that is in this range (see section 1.1.1). A value of 0 indicates an infinite lease, i.e.,
973 one that does not expire.

974 **5.5.8 notify-lease-time-default (integer(0:MAX))**

975 This REQUIRED Printer attribute specifies the value of the lease time that the Printer object has been
976 configured to assume if the client does not supply a "notify-lease-time-requested" operation attribute in the
977 Subscribe-Create-Printer-Subscription or Renew-Printer-Subscription operationsrequests. A Printer MUST
978 support this attribute if it supports the Subscribe-Printer operation.

979 **5.5.9 persistent-jobs-supported (boolean)**

980 This OPTIONAL Printer attribute indicates whether or not the Printer supports persistent Jobs, i.e., Jobs
981 object that are preserved across power cycles. If Jobs are persistent, then Per-Job Subscriptions MUST also
982 be persistent, since they are part of the Job object. It is RECOMMENDED that Jobs (and Per-Job
983 Subscriptions) be persistent.

984 **5.5.10 persistent-subscriptions-supported (boolean)**

985 This OPTIONAL Printer attribute indicates whether or not the Printer supports persistent Per-Printer
986 Subscriptions, i.e., Subscription objects that are preserved across power cycles. When this value is 'true'
987 the implementation MAY support some that are persistent and some that are not. If the value is 'false' or
988 the attribute is not supported, Per-Printer Subscriptions MUST NOT be persistent. It is RECOMMENDED
989 that Per-Printer subscriptions be persistent.

990 5.5.11 printer-state-change-time (integer(MIN1:MAX))

991 This OPTIONAL Printer attribute records the time, i.e., copy of the Printer's "printer-up-time" attribute,
992 that the Printer's "printer-state" attribute was last changed. On power-up, the Printer populates the "printer-
993 state-change-time" from its "printer-up-time" attribute, so that it always has a value.

994 5.5.12 printer-state-change-date-time (dateTime)

995 This OPTIONAL Printer attribute records the date and time, i.e., copy of the Printer's "printer-current-time"
996 attribute, that the Printer's "printer-state" attribute was last changed. On power-up, the Printer populates the
997 "printer-state-change-date-time" from its "printer-current-time" attribute, so that it always has a value.

998 6 Notification Content

999 This section defines the Notification content that is sent to a Notification Recipient when an event occurs.
1000 The Notification MAY be sent by the IPP Printer or a third party Notification Service (see section 2.3).
1001 There are two notification content types: Machine Consumable and Human Consumable. For most
1002 notification delivery methods both content types are defined. Some of the notification delivery methods
1003 define are defined to support only one content type. A Printer MUST support all content types defined for
1004 a notification delivery method, if it supports that notification delivery method.~~the notification content type~~
1005 ~~to be used. For example, 'mailto' uses "multipart/report" and 'http' and 'ipp-notify' use~~
1006 ~~"application/ipp".~~

1007 6.1 Notification content MIME media type formats

1008 ~~Once a client's create job request, Subscribe Job, or Subscribe Printer is successful, the Printer adds the~~
1009 ~~"notify-recipients" and "notify-events" attribute values to its subscription information on the Job, Job, or~~
1010 ~~Printer object, respectively, and returns the appropriate response. This section defines the Notification~~
1011 ~~content that the Notification Source sends asynchronously to each Notification Recipient based on the~~
1012 ~~subscription information stored with the subscription. Subsequently, notifications are asynchronously sent~~
1013 ~~based on the subscription information stored by the Printer. The following descriptions give more detail on~~
1014 ~~how the notifications are formed for each type.~~

1015 ~~An implementation MUST NOT extend the contents of a notification.~~

1016 Notifications are generated using the following content formats:

1017 **'application/ipp'** - Machine Consumable notification content using the 'application/ipp' MIME
1018 media type [ipp-mod] using the Get-Job-Attributes response encoding for job events and Get-
1019 Printer-Attributes for printer events. The attributes listed in sections 6.2 and 6.3 are sent in an
1020 notification for Job events. The attributes listed in sections 6.2 and 6.4 are sent in an
1021 notification for Printer events. For any string in any notification, the charset and natural
1022 language rules that apply to all IPP operations apply to the notification strings as well, since
1023 they are represented as operation responses. The Unsupported Attributes Group in the response
1024 is not sent. If the values of any of the attributes sent in an notification content are not known,
1025 the value sent in the report content is the out-of-band 'unknown' value, rather than omitting the
1026 attribute (see the beginning of [ipp-mod] section 4.1).

1027 An implementation MAY extend the contents of the Machine Consumable notification by
1028 adding additional attributes.

1029 '**text/plain; charset=utf-8**' - Human Consumable notification content type [RFC2046]. The text
 1030 message SHOULD include information about the attributes in sections 6.2 and 6.3 for job
 1031 events or in sections 6.2 and 6.4 for printer events. This information is localized according to
 1032 the information about natural language and charset in the subscription.~~If the charset to be used~~
 1033 ~~in the mail message is other than US-ASCII, the /charset parameter must be included in the~~
 1034 ~~value of this content type header and in the notification content [RFC2046].~~

1035 An implementation MAY extend the contents of a Human Consumable notification by adding
 1036 additional information.

1037 **6.2 Notification content attributes common to Job and Printer events**

1038 This section lists the parameters and attributes that are included in both Job and Printer event Notifications.
 1039 Some events do not include all of these attributes as shown in Table 6. Each notification content contains a
 1040 single Job or Printer event, whether that event was subscribed using the Job Submission Subscription
 1041 mechanism or the Per-Printer subscription mechanism. If either kind of subscription subscribed to both Job
 1042 and Printer events, then they will be sent as separate Job notification content and Printer notification
 1043 contents to the same Notification Recipient.

1044 **Table 6 - Common Job and Printer Notification content attributes**

	Reference	Events	
<u>Attributes</u>		'job-progress'	all others
1. <u>version-number (integer (0:32767))</u>	mod 3.1.1	R	R
2. <u>status-code (integer (0:32767))</u>	mod 3.1.1	R	R
3. <u>request-id (integer (0:MAX))</u>	5.3.7 & mod 3.1.1	R	R
4. <u>attributes-charset (charset)</u>	5.3.5 & mod 3.1.4	R	R
5. <u>attributes-natural-language (naturalLanguage)</u>	5.3.6 & mod 3.1.4	R	R
6. <u>printer-uri (uri)</u>	5.4.3	R	R
7. <u>printer-name (name(127))</u>	mod 4.4.4		R
8. <u>job-id (integer(1:MAX))</u>	mod 4.3.2	R	R**
9. <u>job-name (name(MAX))</u>	mod 4.3.5		R**
10. <u>trigger-event (type2 keyword)</u>	5.3.2	R	R
11. <u>trigger-time (integer(MIN:MAX))</u>		R	R
12. <u>trigger-date-time (dateTime)</u>			O
13. <u>subscription-id (integer(1:MAX))</u>	5.4.1	R	R
14. <u>subscriber-user-name (name(MAX))</u>	5.4.4		R
15. <u>subscriber-user-data (octetString(63))</u>	5.3.4		R

1045 Attribute Notes:

1046 "status-code" - a value of 600 for a Job event and 601 for a Printer event.

- 1047 "request-id" - the sequence number for this subscription, starting at 1 for each subscription.
- 1048 "attributes-charset" - the value comes from the "notify-attributes-charset" in the "job-notify" Per-Job
1049 Subscription and the "notify-attributes-charset" in the Per-Printer Subscription object.
- 1050 "attributes-natural-language" - the value comes from the "notify-attributes-natural-language" in the "job-
1051 notify" Per-Job Subscription and the "notify-attributes-natural-language" in the Per-Printer
1052 Subscription object.
- 1053 "printer-uri" - the value comes from the "job-printer-uri" Job attribute for Per-Job subscriptions.
- 1054 **"job-id" and "job-name" - included in Printer event Notifications only for Per-Job subscriptions.
- 1055 "trigger-event" - the event that caused this Notification to be delivered.
- 1056 "trigger-time" - the "printer-up-time" value when the event occurred.
- 1057 "trigger-date-time" - the "printer-current-time" value when the event occurred - OPTIONAL to support.
- 1058 "job-name" - SNMP delivery method can truncate to less than 255 octets, since the Notification needs to fit
1059 into 484 octets or so on some transports that SNMP is defined for.
- 1060 "subscription-id" - for Per-Job subscriptions, the value is the index of the "job-notify" collection value,
1061 starting with 1 for the first collection value.
- 1062 "subscriber-user-name" - comes from "requesting-user-name" Job attribute for Per-Job subscriptions.
1063 SNMP delivery method can truncate to less than 255 octets, since the Notification needs to fit into
1064 484 octets or so on some transports that SNMP is defined for.
- 1065 "subscriber-user-data" - opaque user data that may identify either the Subscriber and/or the ultimate
1066 Notification Recipient.

1067 **6.3 Additional Notification content attributes for Job events only**

1068 This section lists the additional attributes that are included only in Job event Notifications. Some events do
1069 not include all of these attributes as shown in Table 7.

1070 **Table 7 - Additional Notification content attributes for Job events only**

		Events		
<u>Attributes</u>	Reference	'job-progress'	'job-completed'	all others
16. <u>job-state (type1 enum)</u>	mod 4.3.7		R	R
17. <u>job-state-reasons (1setOf type2 keyword)</u>	mod 4.3.8		R	R
18. <u>job-k-octets-processed (integer(0:MAX))</u>	mod 4.3.18.1	O	O	
19. <u>job-impressions-completed (integer(0:MAX))</u>	mod 4.3.18.2	O	O	

		Events		
<u>Attributes</u>	Reference	'job-progress'	'job-completed'	all others
20. <u>job-media-sheets-completed (integer(0:MAX))</u>	mod 4.3.18.3	O	O	
21. <u>job-collation-type (type2 enum)</u>	[ipp-prog]	R		
22. <u>sheet-completed-copy-number (integer(-2:MAX))</u>	[ipp-prog]	R		
23. <u>sheet-completed-document-number(integer(-2:MAX))</u>	[ipp-prog]	R		
24. <u>impressions-interpreted (integer(-2:MAX))</u>	[ipp-prog]	R		
25. <u>impressions-completed-current-copy (integer(-2:MAX))</u>	[ipp-prog]	R		

6.4 Additional Notification content attributes for Printer events only

Table 8 lists the additional attributes that are included only in Printer event Notifications.

Table 8 - Additional Notification content attributes for Printer events only

		Events
<u>Attributes</u>	Reference	<u>all printer events</u>
26. <u>printer-state (type1 enum)</u>	mod 4.4.11	<u>R</u>
27. <u>printer-state-reasons (1setOf type2 keyword)</u>	mod 4.4.12	<u>R</u>
28. <u>printer-is-accepting-jobs (boolean)</u>	mod 4.4.23	<u>R</u>

6.2 Basic Job notification content

This section lists the parameters and attributes that are included in the Basic Job notification content. Additional job event definitions can be registered which use the Basic Job Notification content. If additional attributes are needed, additional Job Notification content formats will be defined and assigned a new status code to be used in the report in order to distinguish each report format. For example of another Job Notification content format, see [ipp-prog] for 'job-progress-events'.

Each Basic Job notification content contains a single job event, whether that event was subscribed using the Job Submission Subscription mechanism or the Explicit Subscription (Subscribe Job or Subscribe Printer). If either kind of subscription subscribed to both Job and Printer events, then they will be send as separate Basic Job notification content and Basic Printer notification contents to the same Notification Recipients.

If notification is supported, the implementation MUST support the following REQUIRED job object attributes, MUST support the following CONDITIONAL job object attributes, if the condition is true, and MAY support the following OPTIONAL job object attributes. Any of the following Job Description attributes that are supported MUST be included in a notification. All job notifications MUST use the Get-Job-Attributes response syntax.

The Basic Job Notification MUST include the following response parameters and job object attributes. The Job Attributes MAY be in any order:

Job object parameter/attribute	REQUIRED IN REPORT?	reference
version-number (integer (0:32767))	REQUIRED	[ipp-mod] 3.1.1
status-code (with the value: basic-job-event(600))	REQUIRED	[ipp-mod] 3.1.1
request-id (used as 32-bit sequence number - see section 8.1	REQUIRED	[ipp-mod] 3.1.1
attributes-charset (charset)	REQUIRED	[ipp-mod] 3.1.4
attributes-natural-language (naturalLanguage)	REQUIRED	[ipp-mod] 3.1.4
[subscription-id (integer(1:MAX))]	REQUIRED	section
job-printer-uri (uri)	REQUIRED	[ipp-mod] 4.3.3
job-id (integer(1:MAX))	REQUIRED	[ipp-mod] 4.3.2
job-trigger-event (type2 keyword)	REQUIRED	9.3
job-trigger-message* (text(255))	CONDITIONAL	9.4
job-trigger-time (integer(1:MAX))	REQUIRED	9.5
job-trigger-date-time (dateTime)	RECOMMENDED	9.6
job-state (type1 enum)	REQUIRED	[ipp-mod] 4.3.7
previous-job-state (type1 enum)	REQUIRED	9.7
job-state-reasons (1setOf type2 keyword)	REQUIRED	[ipp-mod] 4.3.8
job-state-reasons-added (1setOf type2 keyword)	REQUIRED	9.8
job-state-reasons-deleted (1setOf type2 keyword)	REQUIRED	9.9
subscription-id** (integer(1:MAX))	CONDITIONAL	7

Figure 8 – Basic Job Notification Content

1142 ~~Conditional attributes in the notification:~~

1143 ~~*If "status-message" is supported as an Operation attribute in operation responses, then "job-trigger-~~
1144 ~~message" MUST be supported in the notification content.~~

1145 ~~** If the Subscribe Job or Subscribe Printer operation is implemented and the notification is caused by an~~
1146 ~~explicit subscription request, the "subscription-id" MUST be supplied in the notification content.~~

1147 ~~If the values of any of the attributes sent in an notification content are not known, the value sent in the~~
1148 ~~report content is the out-of-band 'unknown' value, rather than omitting the attribute. See [ipp-mod] section~~
1149 ~~4.1.~~

1150 ~~ISSUE 17—Should we copy in the [ipp-prog] Job Progress notification content into this Event Notification~~
1151 ~~specification?~~

1152 ~~6.3 Basic Printer notification content~~

1153 ~~This section lists the parameters and attributes that are included in the Basic Printer notification content.~~
1154 ~~Additional printer events can be registered which use the Basic Job Notification content. If additional~~
1155 ~~attributes are needed, additional Printer Notification content formats will be registered and assigned a new~~
1156 ~~status code to be used in the report in order to distinguish each report format.~~

1157 ~~Each Basic Printer notification content contains a single printer event, whether that event was subscribed~~
1158 ~~using the Job Submission Subscription mechanism or the Explicit Subscription (Subscribe Job or~~
1159 ~~Subscribe Printer). If either kind of subscription subscribed to both job and printer events, then they will~~
1160 ~~be send as separate Basic Job notification content (see section 8.2) and Basic Printer notification contents to~~
1161 ~~the same Notification Recipients.~~

1162 ~~If notification is supported, the implementation MUST supported the following REQUIRED attributes,~~
1163 ~~MUST supported the following CONDITIONAL job object attributes, if the condition is true, and MAY~~
1164 ~~supported the following OPTIONAL Printer object attributes in any printer notification. Any of the~~
1165 ~~following Printer Description attributes that are supported MUST be included in an notification. All printer~~
1166 ~~notifications MUST use the Get Printer Attributes response syntax. The Basic Printer Notification MUST~~
1167 ~~include the following response parameters and Printer object attributes. The Printer Attributes MAY be in~~
1168 ~~any order.~~

1169			
1170	Printer object paramater/attribute	REQUIRED	reference
1171		IN REPORT?	
1172			
1173	version number	REQUIRED	[ipp mod] 3.1.1
1174			
1175	status code (with the value:	REQUIRED	[ipp mod] 3.1.1
1176	basic printer event(601))		
1177			
1178	request id (used as sequence number	REQUIRED	[ipp mod] 3.1.1
1179	see section 8.1		
1180			
1181	printer uri supported (uri)	REQUIRED	[ipp mod] 4.4.1
1182			
1183	printer trigger event	REQUIRED	10.1
1184	(type2 keyword)		
1185			
1186	printer trigger message*(text(255))	CONDITIONAL	10.2
1187			
1188	printer trigger time	REQUIRED	10.3
1189	(integer(1:MAX))		
1190			
1191	printer trigger date time(dateTime)	RECOMMENDED	10.4
1192			
1193	printer state (type1 enum)	REQUIRED	[ipp mod] 4.4.10
1194			
1195	previous printer state (type1 enum)	REQUIRED	10.5
1196			
1197	printer state reasons	REQUIRED	[ipp mod] 4.4.11
1198	(1setOf type2 keyword)		
1199			
1200	printer state reasons added	REQUIRED	10.6
1201	(1setOf type2 keyword)		
1202			
1203	printer state reasons deleted	REQUIRED	10.6
1204	(1setOf type2 keyword)		
1205			
1206	subscription id** (integer(1:MAX))	CONDITIONAL	7
1207			
1208			

Figure 10—Basic Printer Notification Content

Conditional attributes in the notification:

* If "status message" is supported as an Operation attribute in operation responses, then "printer trigger message" MUST be supported in the notification content.

** If the Subscribe Printer operation is implemented and the notification is caused by an explicit subscription request, the "subscription id" MUST be supplied in the notification content.

If the values of any of the attributes sent in an notification content are not known, the value sent in the report content is the out of band 'unknown' value, rather than omitting the attribute. See [ipp mod] section 4.1.

7 Operations for Per-Job Subscriptions~~mechanism~~

This section ~~lists~~ defines the REQUIRED operation requests and responses that ~~have some relation to notification, i.e., that~~ are related to Per-Job subscriptions. Section 8 ~~lists~~ defines the ~~OPTIONAL~~ REQUIRED operation requests and responses associated with the ~~OPTIONAL~~ REQUIRED Per-Printer subscription and its Subscription object.

7.1 Job Creation Operations (Create-Job, Print-Job, Print-URI) and Validate-Job

~~As in the current notification spec (July 22, 1999),~~ The usual method for a client to associate one subscription with a Job is to specify the subscription when the job is created. For a Per-Job Subscription, the client supplies the "job-notify (1setOf collection)" operation attribute with the following notification operation member attributes listed in Table 9 with any of the job creation operations (Create-Job, Print-Job, Print-URI), plus Validate-Job (which doesn't create a job or subscription). If the client does not supply these "job-notify" attributes in the create operation, there is no subscription made (either implicitly or explicitly). ~~However, a client can add a subscription to a previously created Job object using the Subscribe-Job operation (see section 7.4)~~

If a Printer does not support this notification specification, then it MUST ignore the "job-notify" operation attribute and return it in the response indicated as an attribute that is not supported. See [ipp-mod] section 3.1.7 for details on returning Unsupported Attributes.

Table 9 - Member attributes of the "job-notify" collection operation attribute

<u>Member attribute of "job-notify" collection</u>	<u>Referen</u> <u>ce</u>	<u>REQUIRED</u> <u>in request</u>	<u>Printer support</u>
notify-recipients (1setOf uri)	5.3.1	<u>yes</u>	REQUIRED
notify-events (1setOf type2 keyword)	5.3.2	<u>no</u>	REQUIRED
<u>notify-content-type (mimeMediaType)</u>	5.3.3	<u>no</u>	<u>REQUIRED</u>
subscriber <u>notify</u> -user-data (octetString(63))	5.3.4	<u>no</u>	REQUIRED
notify-exclude-event-mask (octetString(8))			<u>REQUIRED</u>
<u>notify-attributes-charset (charset)</u>	5.3.5	<u>no</u>	<u>OPTIONAL</u>
<u>notify-attributes-natural-language (naturalLanguage)</u>	5.3.6	<u>no</u>	<u>OPTIONAL</u>

See the referenced sections for a definition of these operation attributes, since they are copied to the Job object as the Job Description attributes described in section 5.3.

The following rules apply to Per-Job subscriptions:

- Any subscription can contain job events, printer events, or both.
- The Job Submission Subscription is only valid while the job is "not-completed". The job is "not-completed" while it is in the 'pending', 'pending-held', 'processing', and 'processing-stopped' states. The job changes from being "not-completed" to "retained" when it is done processing and enters any of the 'completed', 'canceled', or 'aborted' states. The job becomes "not-completed" again when it is restarted using the Restart-Job operation (see [ipp-mod]).

- 1245 3. Since no job is created for the Validate-Job operation, the only purpose of supplying the subscription
1246 operation attributes in the Validate-Job operation is to validate that the values are supported; the Printer
1247 object does not establish a notification subscription as a result of the Validate-Job operation.
- 1248 4. Since a Job Submission Subscription is included within a job submission operation, any interest in job
1249 events is limited to "this job" only (the Job object created because of this job creation operation). There
1250 is no mechanism to subscribe to events for all jobs or specifically some job other than this job in a
1251 create operation. But see the ~~Subscribe-Printer~~Create-Printer-Subscription operation (section 8.1) for
1252 an explicit operation to subscribe persistently for job and/or printer events independently of any
1253 particular job submission.
- 1254 5. Event reporting only occurs when a notification recipient has specified a subscription to any event(s).
- 1255 6. The notification implementation MAY allow an administrator to configure a policy on what events may
1256 be dropped.
- 1257 7. If the OPTIONAL "notify-attributes-charset" attribute is not supported or the supplied value is not
1258 supported, the IPP Printer MUST return the attribute in the Unsupported Attributes Group but still
1259 accept the operation, as with all Job create operations. In this case, the Printer MUST use the natural
1260 language supplied in the "attributes-charset" Job creation operation attribute, if that natural language
1261 value is supported by the Printer, else the Printer object MUST use the Printer's "charset-configured"
1262 value. See the Print-Job operation in [ipp-mod].
- 1263 8. If the OPTIONAL "notify-attributes-natural-language" attribute is not supported or the supplied value is
1264 not supported, the IPP Printer MUST return the attribute in the Unsupported Attributes Group but still
1265 accept the operation, as with all Job create operations. In this case, the Printer MUST use the natural
1266 language supplied in the "attributes-natural-language" Job creation operation attribute, if that natural
1267 language value is supported by the Printer, else the Printer object MUST use the Printer's "natural-
1268 language-configured" value. See the Print-Job operation in [ipp-mod].

1269 7.2 Get-Printer-Attributes operation

1270 The REQUIRED (by [ipp-mod]) Get-Printer-Attributes can be used to request the additional Printer
1271 Description attributes that indicate the notification supported. See section 5.5.

1272 7.3 Get-Job-Attributes operation

1273 The REQUIRED (by [ipp-mod]) Get-Job-Attributes can be used to request the additional Job Description
1274 attributes that relate to notification. See section 5.5.

7.4 Set-Job-Subscription-Attributes operation

The **OPTIONAL** Set-Job-Subscription-Attributes operation (see [ipp-set2]) allows a client to change the Job attributes of the Job's Per-Job subscription, including to add them in the first place **if they had not been supplied in the Job creation operation** and to remove them from the Job object. This operation replaces all the **collection** values of the supplied **job-notify (1setOf collection)** notification attributes: **notify-recipients**, **notify-events**, **notify-user-data**, and **notify-exclude-event-mask** Job attributes. **Any notification attributes not supplied are not affected.**

In order to cancel **all** Per-Job subscriptions, the client supplies the **job-notify-events** attribute with an **out-of-band** 'none' value (see [ipp-coll]). ~~ISSUE 11—~~or should canceling a Per-Job subscription be done by supplying the out-of-band 'no value' value for "notify recipients" in a Set-Job-Subscription operation, instead of 'none' to "notify-events", since "notify-recipients" is the attribute that indicates that there is notification in a job creation operation? In order to remove the **user-data** (octetString(63)), the client supplies an octetString with zero length. In order to remove the **notify-exclude-event-mask** (octetString(8)), the client supplies a octetString with zero length.

Request:

Group 1: Operation Attributes	Printer support
"attributes-charset" (charset)	R
"attributes-natural-language" (naturalLanguage)	R
"printer-uri" (uri)	R
"requesting-user-name" (name(MAX))	RECOMMENDED
job-notify (1setOf collection)	R
["notify-recipients" (1setOf uri)]	R
["notify-events" (1setOf type2 keyword)]	R
["notify-user-data" (octetString(63))]	R
["notify-exclude-event-mask" (1setOf octetString(8))]	R
["notify-natural-languages" (1setOf naturalLanguage)]	O

Response:

Group 1: Operation Attributes	Printer support
"status-code" (type2 enum)	R
"attributes-charset" (charset)	R
"attributes-natural-language" (naturalLanguage)	R
["status-message" (text(255))]	O
["detailed-status-message" (text(MAX))]	O
Group 2: Unsupported Attributes	R

The "job-notify" operation attribute is copied to the "job-notify" Job Description attribute. See section 5.1 for a definition of **the "job-notify" Job Description attribute**~~these operation attributes, since they are copied to the Job object as Job Description attributes.~~

8 Per-Printer Subscriptions and the Subscription object

This section lists the **REQUIRED Per-Printer Subscriptions** operation requests and responses **and the Subscription object** that **MUST** be supported ~~if the OPTIONAL Per-Printer Subscriptions are supported which REQUIRES that the Subscription object be supported and vice-versa.~~

1298 **ISSUE 3 - Are these abbreviated operation definitions ok for understandability and conformance, or should**
 1299 **we use the more verbose definition style of the [ipp-mod]?**

1300 8.1 Create-Printer-Subscription operation

1301 The **REQUIRED** Create-Printer-Subscription operation creates a Per-Printer subscription by creating a Per-
 1302 Printer Subscription object which is added to the Printer object. The client can specify one or more job
 1303 and/or printer events to be delivered as notifications to one ~~or more~~ Notification Recipients. The job events
 1304 are for any job submitted to the Printer. The printer events are any events generated by that Printer. ~~If~~
 1305 ~~"Explicit Subscriptions" is implemented, this operation is REQUIRED to be supported by the Printer.~~

1306 The Printer returns a subscription id and the length of time for which it has granted a lease for the
 1307 subscription. The client must renew the subscription using the Renew-~~Printer~~-Subscription operation (see
 1308 section 8.4) before the lease runs out in order to maintain the subscription. A client can unsubscribe using
 1309 the ~~Unsubscribe~~~~Cancel-Printer-Subscription~~ operation (section 8.5) and the subscription id.

1310 Two ~~Subscribe~~~~Create-Printer-Subscription~~ operations with the same events and same Notification
 1311 Recipients MUST be kept as distinct subscriptions and be assigned distinct subscription ids. A Printer
 1312 ~~MAY suppress sending duplicate notifications to the same Notification Recipient, but the printer~~ MUST
 1313 allow ~~such~~ duplicate subscriptions such that ~~Unsubscribe~~~~Cancel-Printer-Subscription~~ doesn't unsubscribe
 1314 both subscriptions ~~and MUST send the Notifications twice to the Notification Recipient, since the "request-~~
 1315 ~~id" is supposed to count monotonically for each subscription.~~

1316 If the Printer has a bounded set of concurrent subscriptions (for the specified events or any events), the
 1317 printer rejects the operation and returns the 'server-error-too-many-subscriptions' status code. The client
 1318 SHOULD try again later.

1319 Access Rights: The authenticated user (see [IPP-MOD] section 8.3) performing this operation MUST ~~be~~
 1320 ~~an~~~~have~~ operator or administrator ~~access rights for~~ ~~of~~ the Printer object (see [IPP-MOD] sections 1 and 8.5).
 1321 Otherwise the IPP object MUST reject the operation and return: client-error-forbidden, client-error-not-
 1322 authenticated, and client-error-not-authorized as appropriate.

1323 Request:

Group 1: Operation Attributes	Printer support
"attributes-charset" (charset)	R
"attributes-natural-language" (naturalLanguage)	R
"printer-uri" (uri)	R
["requesting-user-name" (name(MAX))]	RECOMMENDED
["notify-recipients" (1setOf uri)]	R
["notify-events" (1setOf type2 keyword)]	R
["notify-content-type" (mimeMediaType)]	R
["subscribernotify-user-data" (octetString(63))]	R
["notify-exclude-event-mask" (1setOf octetString(8))]	R
["notify-attributes-charset" (charset)]	O
["notify- attributes -natural-languages" (1setOf naturalLanguage)]	O
["notify-lease-time-requested" (integer(0:MAX))]	R
["notify-persistence- requested " (boolean)]	O

1324 Response:

Group 1: Operation Attributes	Printer Support
"status-code" (type2 enum)	R
"attributes-charset" (charset)	R
"attributes-natural-language" (naturalLanguage)	R
["status-message" (text(255))]	O
["detailed-status-message" (text(MAX))]	O
"subscription-id" (integer(1:MAX))	R
"notify-lease- expiration -time" (integer(0:MAX))	R
"notify-lease-time-granted" (integer(0:MAX))	R
"notify-persistence-granted" (boolean)	R
Group 2: Unsupported Attributes	R

1325 Attribute Notes:

1326 "notify-recipient" (uri) - the client MUST supply this attribute in order to have a subscription.

1327 "notify-lease-time-requested" (integer(0:MAX)) - the number of seconds requested for the Per-Printer
 1328 subscription lease. A value of 0 indicates a request that the Per-Printer Subscription lease never
 1329 expire. Supplying a 0 value MAY require authentication in order to be used, if 0 is supported at all.
 1330 If the client does not supply this attribute, the Printer uses its "notify-lease-time-default" value (see
 1331 section 5.5.8).

1332 "notify-persistence-~~requested~~" (boolean) - whether or not the Per-Printer Subscription is to be persistent,
 1333 i.e., saved across power cycles. Note: Persistent trap registrations is a client option in SNMPv3
 1334 [RFC2573].
 1335 ~~ISSUE 12—Ok to have added the OPTIONAL "notify-persistence" (boolean) operation attribute to~~
 1336 ~~the Create Printer Subscription operation?~~

1337 "notify-lease-~~expiration~~-time" (integer(0:MAX)) - The Printer object MUST return this attribute which is
 1338 the time in the future at which the subscription lease will expire, i.e., the "printer-up-time" value (in
 1339 time ticks - see [ipp-mod] section 4.4.29) at which the lease will expire Printer will delete the
 1340 Subscription. A value of 0 indicates that the lease subscription will never expire.

1341 "notify-lease-time-granted" - The Printer object MUST return this attribute which is the number of seconds
 1342 of time actually granted. The value of "notify-lease-time-granted" may be less than the requester
 1343 requested in the "notify-lease-time-requested" if it was greater than the MAX supported or more
 1344 than the requester requested if it was less than the MIN supported, as indicated in the Printer's
 1345 "notify-lease-time-supported" (rangeOfInteger(0:MAX)) attribute.

1346 "notify-persistence-granted" - whether or not this Per-Printer Subscription object instance is persistent.
 1347 This attribute MUST be returned whether "notify-persistence-requested" is supported or not, so that
 1348 the client knows which.

8.2 Get-Printer-Subscription-Attributes operation

The **REQUIRED** Get-Printer-Subscription-Attributes returns the requested attributes of the identified Per-Printer Subscription object. See sections 5.3 and 5.4.

Request:

Group 1: Operation Attributes		Printer support
"attributes-charset" (charset)		R
"attributes-natural-language" (naturalLanguage)		R
"printer-uri" (uri)		R
["requesting-user-name" (name(MAX))]		RECOMMENDED
"subscription-id" (integer(1:MAX))		R
["requested-attributes" (1setOf type2 keyword)]		R

Response:

Group 1: Operation Attributes		Printer support
"status-code" (type2 enum)		R
"attributes-charset" (charset)		R
"attributes-natural-language" (naturalLanguage)		R
["status-message" (text(255))]		O
["detailed-status-message" (text(MAX))]		O
Group 2: Unsupported Attributes		R
Group 3: <the requested Subscription object attributes>		R

This operation is similar to the Get-Printer-Attributes operation. If the client omits the "requested-attributes" operation attribute, the Printer **MUST** respond as if the client had supplied the 'all' value, i.e., return all of the attributes supported for the Subscription object.

8.3 Get-Printer-Subscriptions operation

The **REQUIRED** Get-Printer-Subscriptions operation returns Per-Printer subscriptions, i.e., Subscription objects.

Request:

Group 1: Operation Attributes		Printer support
"attributes-charset" (charset)		R
"attributes-natural-language" (naturalLanguage)		R
"printer-uri" (uri)		R
["requesting-user-name" (name(MAX))]		RECOMMENDED
["limit" (integer(1:MAX))]		R
["requested-attributes" (1setOf type2 keyword)]		R
["my-subscriptions" (boolean)]		R

Response:

Group 1: Operation Attributes		Printer support
"status-code" (type2 enum)		R
"attributes-charset" (charset)		R
"attributes-natural-language" (naturalLanguage)		R
["status-message" (text)]		O
["detailed-status-message" (text(MAX))]		O
Group 2: Unsupported Attributes		R
Group 3 to N:<the requested Subscription Attributes for each Subscription object in a separate group>		R

Notes: This operation is similar to the Get-Jobs operation ([see \[ipp-mod\]](#)). If the client wants any attributes returned, including the "subscription-id", it must include the attribute keyword name in the "requested-attributes" operation attribute. If the "requested-attributes" operation attribute is omitted, the Printer MUST respond as if the client supplied the value: 'subscription-id'. [If the client supplies the "my-subscriptions" with a 'false' value or omits it, the Printer returns all subscriptions, subject to the security policy in force.](#)

8.4 Renew-Printer-Subscription operation

The **REQUIRED** Renew-Printer-Subscription operation permits a client to request the IPP Printer to extend the lease on a Per-Printer Subscription object instance.

Access Rights: The authenticated user (see [IPP-MOD] section 8.3) performing this operation MUST [either be the owner of the Subscription object or be an have](#) operator or administrator [access rights for of](#) the Printer object (see [IPP-MOD] sections 1 and 8.5). Otherwise the IPP object MUST reject the operation and return: client-error-forbidden, client-error-not-authenticated, and client-error-not-authorized as appropriate.

Request :

Group 1: Operation Attributes		Printer support
"attributes-charset" (charset)		R
"attributes-natural-language" (naturalLanguage)		R
"printer-uri" (uri)		R
["requesting-user-name" (name(MAX))]		RECOMMENDED
"subscription-id" (integer(1:MAX))		R
["notify-lease-time-requested" (integer(0:MAX))]		R

Response :

Group 1: Operation Attributes	Printer support
"status-code" (type2 enum)	R
"attributes-charset" (<u>charset</u>)	R
"attributes-natural-language" (<u>naturalLanguage</u>)	R
["status-message" (text(255))]	O
["detailed-status-message" (text(MAX))]	O
"notify-lease- <u>expiration-time</u> " (integer(0:MAX))	R
"notify-lease-time-granted" (integer(0:MAX))	R
Group 2: Unsupported Attributes	R

1380 Attribute Notes:

1381 "notify-lease-time-requested" (integer(0:MAX) - the number of seconds requested for the Per-Printer
 1382 subscription lease. Same as Create-Printer-Subscriptions (see section 8.1). A value of 0 indicates a
 1383 request that the Per-Printer Subscription lease never expire. Supplying a 0 value MAY require
 1384 authentication in order to be used, if 0 is supported at all.

1385 "notify-lease-expiration-time" - The Printer object MUST return the "notify lease time granted" which is
 1386 the number of seconds remaining in the lease and the "notify lease time" which is the time in the
 1387 future when the subscription will expire. Same as for the Create-Printer-Subscription operation
 1388 (see section 7.1), i.e., the value of the Printer's "printer-up-time" (time ticks) that the notification
 1389 will be canceled by the Printer.

1390 "notify-lease-time-granted" - the lease time (number of seconds) actually granted. Same as for the Create-
 1391 Printer-Subscription operation (see section 7.1).

1392 Note: There is no way to change any of the Subscription object attributes, except the "notify-lease-
 1393 expiration-time" attribute. In order to change other attributes, a client can create a new Subscription object
 1394 and then use the Cancel-Printer-Subscription operation to cancel the old one (or do this in the other order,
 1395 in case there is a limit on the number of Subscription object instances, as long as a short window with no
 1396 Notifications is ok).

1397 ISSUE-13 - What happens if the client supplies a 0 for the "notify lease time requested" operation
 1398 attribute? Does that result in a canceling of the Subscription? Is that ok? Ok to keep Cancel-Printer-
 1399 Subscription operation too?

1400 ISSUE-14 - Ok that Renew-Printer-Subscription doesn't allow any modification of the Subscription object
 1401 attributes, except the "notify lease time" attribute? If we need a way to change other attributes would we
 1402 add it to this same operation and rename it to Set-Printer-Subscription? Having a Set-Printer-Subscription
 1403 operation would allow a client/server to set the "notify events" to 'none' and thereby reserve a slot using the
 1404 lease time, but not have any Notifications until a subsequence Set-Printer-Subscription operation was done
 1405 that set some events.

1406 Note: There is no need to renew a Per-Job Subscription, since it is effectively the time that the Job is active
 1407 (see section 7.1) has document.

8.5 Cancel-Printer-Subscription operation

The **REQUIRED** Cancel-Printer-Subscription operation allows a client to remove a Per-Printer Subscription object from the Printer. No more Notifications are delivered for that Subscription. Once performed, there is no way to use that Subscription in the future. Subscription-ids should not be reused immediately, so that a stale reference situation is not created. Same as for Cancel-Job and job-ids.

Access Rights: The authenticated user (see [IPP-MOD] section 8.3) performing this operation MUST **either be the owner of the Subscription object or be an** ~~have~~ operator or administrator **access rights for** ~~of~~ the Printer object (see [IPP-MOD] sections 1 and 8.5). Otherwise the IPP object MUST reject the operation and return: client-error-forbidden, client-error-not-authenticated, and client-error-not-authorized as appropriate.

Request :

Group 1: Operation Attributes	Printer support
"attributes-charset" (<u>charset</u>)	R
"attributes-natural-language" (<u>naturalLanguage</u>)	R
"printer-uri" (uri)	R
["requesting-user-name" (name(MAX))]	RECOMMENDED
"subscription-id" (integer(1:MAX))	R

Response :

Group 1: Operation Attributes	Printer support
"status-code" (type2 enum)	R
"attributes-charset" (<u>charset</u>)	R
"attributes-natural-language" (<u>naturalLanguage</u>)	R
["status-message" (text(255))]	O
["detailed-status-message" (text(MAX))]	O
Group 2: Unsupported Attributes	R

9 **Comparison of Per-Job Submission Subscriptions versus ~~Explicit~~ Per-Printer Subscriptions**

Per-Job and Per-Printer subscriptions are quite similar. However, there are some semantic differences between Per-Job ~~submission~~ subscriptions and explicit Per-Printer subscriptions. A "Per-Job Subscription" is established by the client when submitting a job~~between the client and the device when a job create request is made. The attributes as specified in this document are sent to the device and the response includes attributes telling the client if the subscription was successful or not.~~ An Per-Printer ~~Explicit~~ Subscription is established between a client and a device Printer using the four new Create-Printer-Subscription operations: Subscribe Job, Subscribe Printer, Unsubscribe, and Renew Subscription.

Some specific differences are:

1. Either type of subscription can register~~subscribe to~~ for Job events, Printer events, or both.
2. For "Per-Job ~~Submission~~ Subscriptions" ~~and the Subscribe Job operation~~, the subscription is only valid while the job is "not-complete" (see sections 1 and 1).

- 1434 3. For the ~~Per-Printer Subscriptions~~~~Subscribe-Printer operation~~, the subscription is valid until it is
1435 explicitly canceled with an ~~Unsubscribe~~ ~~Cancel-Printer-Subscription~~ operation or the time (in seconds)
1436 that ~~the Printer returned~~ ~~was specified~~ in the "notify-lease-time-~~granted~~" operation attribute expires,
1437 whichever occurs first.
- 1438 4. Job Events in a "~~Per-Job Submission-Subscription~~" and ~~Subscribe-Job operation~~ apply only to "one job"
1439 (the Job ~~created by the job creation~~ ~~specified within the create-job or subscribe-job~~ operation).
- 1440 5. Job Events in a ~~Per-Printer-Subscription operation~~ apply to ALL jobs contained in the IPP Printer
1441 object.
- 1442 6. Printer Events in ~~all~~ ~~both kinds of~~ subscriptions apply no matter which job is being processed, ~~if any~~.

1443 ~~10 Job Submission Subscription~~

1444 "~~Job Submission Subscriptions~~" are specified by the end-user when submitting a job to the Printer using
1445 two new subscription operation attributes described in this section. A client subscribes to events by
1446 supplying these attributes in any create request (i.e., a Print Job Request, Print URI Request, Validate Job
1447 Request, or a Create Job Request). These attributes are multi-valued attributes; the client can supply more
1448 than one value. If the client does not supply these attributes in the create operation, there is no subscription
1449 made (either implicitly or explicitly). However, a client can add a subscription to a previously created Job
1450 object using the ~~Subscribe-Job operation~~ (see section 6.1).

1451 ~~The following rules apply:~~

- 1452 ~~1. Any subscription can contain job events, printer events, or both.~~
- 1453 ~~2. The Job Submission Subscription is only valid while the job is "not-completed". The job is "not-~~
1454 ~~completed" while it is in the 'pending', 'pending-held', 'processing', and 'processing-stopped' states. The~~
1455 ~~job changes from being "not-completed" to "retained" when it is done processing and enters any of the~~
1456 ~~'completed', 'canceled', or 'aborted' states. The job becomes "not-completed" again when it is restarted~~
1457 ~~using the Restart Job operation (see [ipp-mod]). Since no job is created for the Validate Job operation,~~
1458 ~~the only purpose of supplying the subscription operation attributes in the Validate Job operation is to~~
1459 ~~validate that the values are supported; the Printer object does not establish a notification subscription as~~
1460 ~~a result of the Validate Job operation.~~
1461 ~~); The UDP datagram contains the "application/ipp" notification content format (see Section). The~~
1462 ~~notification recipient does not acknowledge receipt of the notification.~~

1463
1464 ~~If the client specifies a "notify-recipients" URI scheme that is not supported by the printer, the Printer~~
1465 ~~MUST return the [new] 'client-error-notify-uri-scheme-not-supported' in the IPP response in reply to the~~
1466 ~~create-request.~~

1467
1468 ~~ISSUE 5—Which URL parameters should we mention (which like SLP) are removed before being used?~~
1469
1470

7.1.2 notify-events (1setOf type2 keyword)

The client ~~OPTIONALLY~~ supplies this operation attribute in a create request. In order to claim conformance to this notification specification, the Printer object **MUST** support this attribute. This attribute identifies the job and/or printer events that are to be delivered to the Notification Recipients as notifications. If the client does not supply this attribute in a create request, but does supply the "notify-recipients", the Printer object uses its "notify-events-default" attribute value (see section).

There are both job events and printer events. Each job and printer event is assigned a keyword to use in this attribute and in the notification.

Standard event keyword values are:

See the values of the "job-trigger-events" Job Description attribute and the "printer-trigger-events" Printer Description attribute.

~~ISSUE 6—Should we add a third operation attribute to Job Submission Subscriptions, Subscribe Job, and Subscript Printer that is an opaque octet string that is passed to the Notification Recipient on every notification, as in Jini? This operation attribute would be OPTIONAL for the client to supply and the Printer to support.~~

11 Explicit Subscriptions

"Explicit Subscriptions" are created by performing explicit subscription operations on the Printer or an identified Job object. These operations are: ~~Subscribe Job, Subscribe Printer, Renew Subscription, and Unsubscribe.~~ These operations are like any other IPP operation with respect to common operation attributes (target, charset, "requesting-user-name", natural language, unsupported attributes, etc.).

If a printer crashes or is rebooted, an attempt should be made for the Printer object to maintain all of the subscriptions currently active.

~~ISSUE 7—Rather than adding the Subscribe Job operation (and possibly corresponding Renew Job Subscription and Unsubscribe Job Subscription operations), why not go back to the original proposal that has a 1setOf collection for the create job operations. The collection contains the two simple "notify-recipients" (1setOf uri) and "notify-events (1setOf type2 keyword). We could say that only one collection value is sufficient for conformance to help the low end. Supporting additional values would give the same functionality as the Subscribe Job operation, but would happen when the job was submitted.~~

8.1 Subscribe-Job Operation

This ~~OPTIONAL~~ operation allows a client to add an explicit notification subscription to a Job object after the job has been created, in case the client did not supply a Job Submission Subscription when the job was submitted. Also this operation allows a client to set up multiple Job Subscriptions with different sets of events for different Notification Recipients. With the Job Submission Subscription (section 5) all Notification Recipients receive the same set of events. If this operation is supported, then Job Submission Subscription **MUST** be supported, as well as the other Explicit Subscription operations (Subscribe Printer, Renew Subscription, and Unsubscribe).

1507 ~~The Printer returns a subscription id so that a client can unsubscribe to the explicit subscription using the~~
1508 ~~Unsubscribe operation (section 6.4) before the job completes. The Printer does not return a lease time,~~
1509 ~~since the subscription lasts until the job completes.~~

1510 ~~Two Subscribe Job operations with the same events and same Notification Recipients MUST be kept as~~
1511 ~~distinct subscriptions and be assigned distinct subscription ids. A Printer MAY suppress sending duplicate~~
1512 ~~notifications to the same Notification Recipient, but the printer MUST allow duplicate subscriptions such~~
1513 ~~that Unsubscribe doesn't unsubscribe both subscriptions.~~

1514 ~~The subscription expires after the job completes (enters the 'completed', 'canceled', or 'aborted' job states)~~
1515 ~~just as with the Job Submission Subscription. See section 5 for more detail.~~

1516 ~~*Access Rights:* The authenticated user (see [ipp-mod] section 8.3) performing this operation must either be~~
1517 ~~the job owner of the current job or an operator or administrator of the Printer object (see [ipp-mod] sections~~
1518 ~~4 and 8.5). Otherwise, the IPP object MUST reject the operation and return: 'client_error_forbidden', 'client-~~
1519 ~~error_not_authenticated', or 'client_error_not_authorized' as appropriate.~~

1520 ~~11.1.1Subscribe Job Request~~

1521 ~~The following groups of attributes are part of the Subscribe Request:~~

1522 ~~Group 1: Operation Attributes~~

1523 ~~Natural Language and Character Set:~~

1524 ~~The "attributes_charset" and "attributes_natural_language" attributes as described in [ipp-mod]~~
1525 ~~section 3.1.4.1.~~

1526 ~~Target:~~

1527 ~~Either (1) the "printer-uri" (uri) plus "job-id" (integer(1:MAX)) or (2) the "job-uri" (uri) operation~~
1528 ~~attribute(s) which define the target for this operation as described in [ipp-mod] section 3.1.5.~~

1529 ~~Requesting User Name:~~

1530 ~~The "requesting-user-name" (name(MAX)) attribute SHOULD be supplied by the client as~~
1531 ~~described in [ipp-mod] section 8.3.~~

1532 ~~"notify-recipients" (1setOf uri):~~

1533 ~~The client MUST supply this attribute. The Printer object MUST support this attribute, if it~~
1534 ~~supports this operation. This attribute describes both where (the address of the Notification~~
1535 ~~Recipients) and how (the delivery method) notifications are to be delivered as notifications when~~
1536 ~~any of the events specified in the "notify-events" attribute occur. See section 5.1.1.~~

1537 ~~"notify-events" (1setOf type2 keyword):~~

1538 ~~The client OPTIONALLY supplies this attribute. The Printer object MUST support this attribute, if~~
1539 ~~it supports this operation. This attribute identifies the job and/or printer events that are to be~~
1540 ~~delivered to the Notification Recipients as notifications (see section 5.1.2). If the client does not~~
1541 ~~supply this attribute, then the Printer object uses its "notify-events-default" attribute value (see~~
1542 ~~section 9.9).~~

1548 ~~8.1.2Subscribe-Job-Response~~

1549 The following groups of attributes are part of the ~~Subscribe-Job-Response~~:

1550 ~~Group 1: Operation-Attributes~~

1551 ~~Status-Message:~~

1552 In addition to the ~~REQUIRED~~ status code returned in every response, the response ~~OPTIONALLY~~
1553 includes a "status-message" (text(255)) and/or a "detailed-status-message" (text(MAX)) operation
1554 attribute as described in [ipp-mod] sections 13 and 3.1.6.

1556 ~~Natural-Language-and-Character-Set:~~

1557 The "attributes-charset" and "attributes-natural-language" attributes as described in [ipp-mod]
1558 section 3.1.4.2.

1560 ~~"subscription-id" (integer(1:MAX)):~~

1561 The Printer object ~~MUST~~ support this attribute and return it in the response. It contains an integer
1562 subscription identifier assigned by the Printer object for use in notifications and ~~Unsubscribe~~
1563 operations. There is no need to renew, since the lease is the same as for ~~Job-Submission~~ operations,
1564 i.e., until the Job is completed.

1566 ~~Group 2: Unsupported-Attributes~~

1567 See [ipp-mod] section 3.1.7 for details on returning ~~Unsupported-Attributes~~.

1569 ~~8.2Subscribe-Printer-Operation~~

1570 This ~~OPTIONAL~~ operation allows a client to add an explicit notification subscription to a Printer object at
1571 any time, whether or not the client has submitted a job to that Printer. The client can specify one or more
1572 job and/or printer events to be delivered as notifications to one or more Notification Recipients. The job
1573 events are for any job submitted to the Printer. The printer events are any events generated by that Printer.
1574 If "Explicit Subscriptions" is implemented, this operation is ~~REQUIRED~~ to be supported by the Printer.

1575 The Printer returns a subscription id and the length of time for which it has granted a lease for the
1576 subscription. The client must renew the subscription using the ~~Renew-Subscription~~ operation (see section
1577 6.3) before the lease runs out in order to maintain the subscription. A client can unsubscribe using the
1578 ~~Unsubscribe~~ operation (section 6.4) and the subscription id.

1579 Two ~~Subscribe-Printer~~ operations with the same events and same Notification Recipients ~~MUST~~ be kept as
1580 distinct subscriptions and be assigned distinct subscription ids. A Printer ~~MAY~~ suppress sending duplicate
1581 notifications to the same Notification Recipient, but the printer ~~MUST~~ allow duplicate subscriptions such
1582 that ~~Unsubscribe~~ doesn't unsubscribe both subscriptions.

1583 If the Printer has a bounded set of concurrent subscriptions (for the specified events or any events), the
1584 printer rejects the operation and returns the 'server-error-too-many-subscriptions' status code. The client
1585 ~~SHOULD~~ try again later.

1586 ~~Access-Rights:~~ The authenticated user (see [IPP-MOD] section 8.3) performing this operation must be an
1587 operator or administrator of the printer object (see [IPP-MOD] sections 1 and 8.5). Otherwise the IPP

1588 ~~object must reject the operation and return: client-error-forbidden, client-error-not-authenticated, and~~
1589 ~~client-error-not-authorized as appropriate.~~

1590 ~~11.2.1Subscribe-Printer-Request~~

1591 ~~The following groups of attributes are part of the Subscribe-Printer-Request:~~

1592 ~~Group 1: Operation Attributes~~

1593 ~~Natural Language and Character Set:~~

1594 ~~The "attributes-charset" and "attributes-natural-language" attributes as described in [ipp-mod]~~
1595 ~~section 3.1.4.1.~~

1597 ~~Target:~~

1598 ~~The "printer-uri" (uri) operation attribute which is the target for this operation as described in [ipp-~~
1599 ~~mod] section 3.1.5.~~

1601 ~~Requesting User Name:~~

1602 ~~The "requesting-user-name" (name(MAX)) attribute SHOULD be supplied by the client as~~
1603 ~~described in [ipp-mod] section 8.3.~~

1605 ~~"notify-recipients" (1setOf uri):~~

1606 ~~The client MUST supply this attribute. The Printer object MUST support this attribute, if~~
1607 ~~supports this operation. This attribute describes both where (the address of the Notification~~
1608 ~~Recipients) and how (the delivery method) notifications are to be delivered as notifications when~~
1609 ~~any of the events specified in the "notify-events" attribute occur. See section 5.1.1.~~

1611 ~~"notify-events" (1setOf type2 keyword):~~

1612 ~~The client OPTIONALLY supplies this attribute. The Printer object MUST support this attribute, if~~
1613 ~~it supports this operation. This attribute identifies the job and/or printer events that are to be~~
1614 ~~delivered to the Notification Recipients as notifications (see section 5.1.2). If the client does not~~
1615 ~~supply the attribute, then the Printer object uses its "notify-events-default" attribute value (see~~
1616 ~~section 9.9).~~

1618 ~~"notify-lease-time" (integer(0:MAX)):~~

1619 ~~The client OPTIONALLY supplies this attribute. The printer object MUST support this attribute, if~~
1620 ~~it supports this operation. This attribute requests a lease time for the subscription, i.e., the number~~
1621 ~~of seconds before the subscription expires.~~

1622
1623 ~~There is no way to query the outstanding subscriptions. Instead, every subscription has a lease time,~~
1624 ~~so that no subscription can be carried too long and become a dead subscription because the~~
1625 ~~Notification Recipient has gone away.~~

1626
1627 ~~If the client does not supply this attribute in the request, the Printer object uses its "notify-lease-~~
1628 ~~time-default" attribute value (see section 9.12).~~

1630 ~~"printer-message-from-operator":~~

1631 ~~If the client supplies this attribute, the Printer copies its value to the Printer's "printer-message-~~
1632 ~~from-operator" Printer-Description attribute.~~

1634 ~~8.2.2Subscribe-Printer-Response~~

1635 ~~The following groups of attributes are part of the Subscribe-Printer-Response:~~

1636 ~~Group 1: Operation-Attributes~~

1637 ~~Status-Message:~~

1638 ~~In addition to the REQUIRED status code returned in every response, the response OPTIONALLY~~
1639 ~~includes a "status-message" (text) operation attribute as described in [ipp-mod] section 3.1.6.~~

1641 ~~Natural-Language-and-Character-Set:~~

1642 ~~The "attributes-charset" and "attributes-natural-language" attributes as described in [ipp-mod]~~
1643 ~~section 3.1.4.1.~~

1646 ~~"subscription-id" (integer(1:MAX)):~~

1647 ~~The Printer object MUST support this attribute and return it in the response. It contains an integer~~
1648 ~~subscription identifier assigned by the Printer object for use in notifications and Renew-~~
1649 ~~Subscription/Unsubscribe operations.~~

1651 ~~"notify-lease-time" (integer(0:MAX)):~~

1652 ~~The Printer object MUST support this attribute and return it in the response. It contains the actual~~
1653 ~~lease time granted, which MUST be in the range specified by the Printer's "notify-lease-time-~~
1654 ~~supported" attribute. If the client supplied a value that is less than the minimum or greater than the~~
1655 ~~maximum, the Printer sets the actual lease time to the minimum or maximum value, respectively,~~
1656 ~~but otherwise accepts and performs the operation normally and no special status code is returned. It~~
1657 ~~is up to the client to check this returned value, if it cares.~~

1659 ~~"initial-sequence-numbers" (1setOf integer(1:MAX)):~~

1660 ~~The Printer object MUST support this attribute and return it in the response. It contains the~~
1661 ~~sequence number values that will be sent in the first notification for each of the events in the~~
1662 ~~"notify-events" operation attribute in the request. The order of the values of this attribute~~
1663 ~~correspond to the order of the values in the "notify-events" operation attribute. Since the event~~
1664 ~~sequence numbers are associated with the event, not the subscription, there is a single sequence~~
1665 ~~number attribute for the Printer for each event, which is counting monotonically for each event~~
1666 ~~separately. Therefore, a Notification Recipient that is concerned about missing notifications, needs~~
1667 ~~to know the first value to expect.~~

1668 ~~Note: The subscribing client needs to convey this value to the Notification Recipient, in case the~~
1669 ~~Notification Recipient cares.~~

1671 ~~ISSUE 8 — Should the event sequence number be associated with the event (see section 7.1) as in~~
1672 ~~Jini, or with the Subscription object? If the latter, then notification batching could happen for the~~
1673 ~~same subscription. Then "xxx-trigger-event" could be changed back to 1setOf to agree with the~~

1674 ~~"notify-events" operation, Job Description, and Printer Description attributes. Then event sequence~~
 1675 ~~numbers always start with 1 for Explicit Printer Subscriptions, just like for Explicit Job and Job~~
 1676 ~~Submission Subscriptions and there is no need to return the starting sequence number for Printer~~
 1677 ~~events.~~

1678 ~~"detailed-status-message" (text(MAX))~~

1679 ~~—The OPTIONAL "detailed-status-message" operation attribute provides additional more detailed~~
 1680 ~~technical and implementation-specific information about the operation. The "detailed-status-~~
 1681 ~~message" attribute's syntax is "text(MAX)". See [ipp-mod] section 3.1.6.3 for more information.~~
 1682

1683 ~~Group 2: Unsupported Attributes~~

1684 ~~See [ipp-mod] section 3.1.7 for details on returning Unsupported Attributes.~~

1685 ~~8.3 Renew Subscription~~

1686 ~~This OPTIONAL operation allows a client to renew the lease time on an already established explicit~~
 1687 ~~subscription. The client supplies the "subscription id" for this operation that was returned in the previous~~
 1688 ~~Subscribe Job or Subscribe Printer operation that created the subscription. If "Explicit Subscriptions" is~~
 1689 ~~implemented, this operation is REQUIRED to be supported by the Printer.~~

1690 ~~The Subscription id MUST NOT change upon renewal of the lease.~~

1691 ~~11.3.1 Renew Subscription Request~~

1692 ~~The following groups of attributes are part of the Subscribe Request:~~

1693 ~~Group 1: Operation Attributes~~

1694 ~~Natural Language and Character Set:~~

1695 ~~The "attributes-charset" and "attributes-natural-language" attributes as described in [ipp-mod]~~
 1696 ~~section 3.1.4.1.~~

1697
 1698 ~~Target:~~

1699 ~~The "printer-uri" (uri) operation attribute which is the target for this operation as described in [ipp-~~
 1700 ~~mod] section 3.1.5.~~

1701
 1702 ~~ISSUE 9—A "printer-uri" plus "subscription id" isn't enough to target an Explicit Job Subscription?~~
 1703 ~~Do we really need both Renew Printer Subscription and Renew Job Subscription, both which~~
 1704 ~~require a "subscription id", but the former has a Printer object target and the latter has a Job object~~
 1705 ~~target?~~

1706
 1707 ~~Requesting User Name:~~

1708 ~~The "requesting-user-name" (name(MAX)) attribute SHOULD be supplied by the client as~~
 1709 ~~described in [ipp-mod] section 8.3.~~

1710
 1711 ~~"subscription-id" (integer(1:MAX)):~~

1712 ~~The client MUST supply this attribute. The printer object MUST support this attribute. It identifies~~
 1713 ~~the subscription to be renewed, i.e., it is the integer subscription identifier returned by the Printer~~
 1714 ~~object in a previous Subscribe or Renew Subscription operation.~~
 1715

1716 The Printer returns a 'client-error-not-found' status code, if the subscription id is not found (or has
1717 expired).

1718
1719 "notify-lease-time" (integer(0:MAX)):

1720 See the description of "notify-lease-time" for the Subscribe operation request in Section 6.2.1.
1721
1722

1723 **8.3.2 Renew-Subscription Response**

1724 The following groups of attributes are part of the Subscribe Response:

1725 Group 1: Operation Attributes

1726 Status Message:

1727 In addition to the REQUIRED status code returned in every response, the response OPTIONALLY
1728 includes a "status-message" (text) operation attribute as described in [ipp-mod] section 3.1.6.
1729

1730 Natural Language and Character Set:

1731 The "attributes-charset" and "attributes-natural-language" attributes as described in [ipp-mod]
1732 section 3.1.4.1.
1733

1734 "notify-lease-time" (integer(0:MAX)):

1735 See the description of "notify-lease-time" for the Subscribe operation response in Section 6.2.2.
1736

1737 Group 2: Unsupported Attributes

1738 See section 3.1.7 for details on returning Unsupported Attributes.
1739

1740 *Access Rights:* The authenticated user (see [IPP-MOD] section 8.3) performing this operation must be an
1741 operator or administrator of the printer object (see [IPP-MOD] sections 1 and 8.5). Otherwise the IPP
1742 object must reject the operation and return: client-error-forbidden, client-error-not-authenticated, and
1743 client-error-not-authorized as appropriate.

1744 **ISSUE 10**—Can't we have authentication for subscriptions as we have for jobs? Then the owner of the
1745 subscription, i.e., the user that performed the Explicit Subscription can Renew or Unsubscribe.

1746 **8.4 Unsubscribe**

1747 This OPTIONAL operation allows a client to unsubscribe explicit notification subscription. The
1748 "subscription-id" is required to perform this operation. Once a client performs an Unsubscribe operation,
1749 the Printer (or an associated notification service) immediately stops sending notifications to the associated
1750 Notification Recipient(s) for that subscription. If "Explicit Subscriptions" is implemented, this operation is
1751 REQUIRED to be supported by the Printer.

1752 **ISSUE 11**—Add way to the Unsubscribe operation to unsubscribe all subscriptions? all "my"
1753 subscriptions?

1754 *Access Rights:* The authenticated user (see [IPP-MOD] section 8.3) performing this operation must be an
1755 operator or administrator of the printer object (see [IPP-MOD] sections 1 and 8.5). Otherwise the IPP
1756 object must reject the operation and return: client-error-forbidden, client-error-not-authenticated, and
1757 client-error-not-authorized as appropriate.

1758 ~~ISSUE 12—Can't we have authentication for subscriptions as we have for jobs? Then the owner of the~~
1759 ~~subscription, i.e., the user that performed the Explicit Subscription can Renew or Unsubscribe. Or does the~~
1760 ~~lease and sequence number concepts mean that only operators need to be able to Unsubscribe?~~

1761 ~~11.4.1 Unsubscribe Request~~

1762 ~~The following groups of attributes are part of the Unsubscribe Request:~~

1763 ~~Group 1: Operation Attributes~~

1764 ~~Natural Language and Character Set:~~

1765 ~~The "attributes-charset" and "attributes-natural-language" attributes as described in [ipp-mod]~~
1766 ~~section 3.1.4.1.~~

1767 ~~Target:~~

1768 ~~The "printer-uri" (uri) operation attribute which is the target for this operation as described in [ipp-~~
1769 ~~mod] section 3.1.5.~~

1770 ~~ISSUE 13—A "printer-uri" plus "subscription-id" isn't enough to target an Explicit Job~~
1771 ~~Subscription? Do we really need both Unsubscribe-Printer and Unsubscribe-Job, both which~~
1772 ~~require a "subscription-id", but the former has a Printer object target and the latter has a Job object~~
1773 ~~target?~~

1774 ~~Requesting User Name:~~

1775 ~~The "requesting-user-name" (name(MAX)) attribute SHOULD be supplied by the client as~~
1776 ~~described in [ipp-mod] section 8.3.~~

1777 ~~"subscription-id" (integer(1:MAX)):~~

1778 ~~The client MUST supply this attribute. The printer object MUST support this attribute. It identifies~~
1779 ~~the subscription to be removed, i.e., it is the integer subscription identifier returned by the Printer~~
1780 ~~object in a previous Subscribe or Renew Subscription operation.~~

1781 ~~The Printer returns a 'client-error-not-found' status code, if the subscription id is not found (or has~~
1782 ~~expired).~~

1783 ~~8.4.2 Unsubscribe Response~~

1784 ~~The following groups of attributes are part of the Unsubscribe Response:~~

1785 ~~Group 1: Operation Attributes~~

1786 ~~Status Message:~~

1787 ~~In addition to the REQUIRED status code returned in every response, the response OPTIONALLY~~
1788 ~~includes a "status-message" (text) operation attribute as described in [ipp-mod] section 3.1.6.~~

1789 ~~Natural Language and Character Set:~~

1790 ~~The "attributes-charset" and "attributes-natural-language" attributes as described in [ipp-mod]~~
1791 ~~section 3.1.4.1.~~

1800 ~~Group 2: Unsupported Attributes~~

1801 ~~See section 3.1.7 for details on returning Unsupported Attributes.~~

1802

1803 ~~ISSUE 14 — Do we need a Get Printer Subscriptions operation that returns a list of explicit subscriptions to~~
1804 ~~the Printer object? Jini has such an operation. This operation could be used by a client that has forgotten~~
1805 ~~the subscription id of a long standing subscription. On the other hand, the lease concept was introduced to~~
1806 ~~eliminate the need for a Get Printer Subscriptions operation. Also the sequence number mechanism also~~
1807 ~~helps with filtering out duplicate subscriptions that send the same event more than once, since the same~~
1808 ~~sequence number is send in each. If we do add a Get Printer Subscriptions operation, then probably need~~
1809 ~~to include a "which subscriptions" operation attribute with values: 'my subscriptions' and 'all subscriptions',~~
1810 ~~just like Get Jobs?~~

1811 ~~10 Job Description Attributes~~

1812 ~~The following Job Description attributes are defined for use with notification:~~

1813 ~~10.1 notify-recipients (1setOf uri)~~

1814 ~~This REQUIRED READ-ONLY attribute describes both where (the address) and how (the delivery~~
1815 ~~method) notifications are to be delivered when any of the events specified in the "notify events" attribute~~
1816 ~~occur. The Printer object MUST populate this Job Description attribute from the corresponding Operation~~
1817 ~~attribute supplied by the client in t for more description of this attribute.~~

1818 ~~Note: There is no way to query the recipients that have been subscribed using the Subscribe Job operation.~~

1819 ~~ISSUE 18 — How many individuals, recipients can be established to be notified of a particular event? The~~
1820 ~~number of recipients should have a minimum number required for support. We did not agree on a such a~~
1821 ~~number. This needs more discussion. If the maximum number required is 1, then clients might not bother~~
1822 ~~supporting more than one recipient in a subscription.~~

1823 ~~10.2 notify-events (1setOf type2 keyword)~~

1824 ~~for the behavior if the client supplied value is outside this range.~~

1825 ~~11.12 notify-lease-time-default (integer(0:MAX))~~

1826 ~~This Printer attribute specifies the value of the lease time that the Printer object has been configured to~~
1827 ~~assume if the client does not supply a "notify lease time" operation attribute in the Subscribe Printer or~~
1828 ~~Renew Subscription operations. A Printer MUST support this attribute if it supports the Subscribe Printer~~
1829 ~~operation.~~

1830 ~~11.13 number-of-subscriptions-supported (integer(1:MAX))~~

1831 ~~This OPTIONAL attribute identifies the number of explicit subscriptions using the Subscribe Printer~~
1832 ~~operation that this Printer object can handle at once. The Printer object MUST support this Printer~~
1833 ~~Description attribute, if it supports the Subscribe Printer operation.~~

1834 ~~NOTE: An event for subscription expiration is not defined. It is the client's responsibility to set up a renew~~
1835 ~~timer. Such a timer will not depend on the reliability of notification delivery, and so will be more reliable.~~

10 Conformance Requirements

This section further enhances the Conformance Requirements detailed in [IPP-MOD] section 5. Extensions made to the events herein must be made such that new events or event attributes are backward compatible to clients who implemented early versions of this notification specification.

It is OPTIONAL to implement this Event Notification specification. If implemented, IPP objects MUST support all of the REQUIRED object attributes as defined in this document in the indicated sections.

~~If an object supports an attribute, it MUST support only those values specified in this document or through the extension mechanism described in [IPP-MOD] section 5.2.4.~~

If IPP Notification is implemented, ~~it is OPTIONAL to support the "Explicit Subscriptions" operations. If "Explicit Subscriptions" is implemented,~~ the operations described in this document must be supported as described in Table 10:

Table 10 - Conformance Requirements for Operations

Attribute	Conformance requirements
<u>"job-notify" in Job Creation operations (section 1)</u>	<u>REQUIRED</u>
<u>Set-Job-Attributes (see [ipp-set2])</u>	<u>OPTIONAL</u>
<u>Subscribe-Job (section 6.1)</u>	<u>OPTIONAL</u>
<u>SubscribeCreate-Printer-Subscription (section 8.1)</u>	REQUIRED
<u>Get-Printer-Subscription-Attributes (section 8.2)</u>	<u>REQUIRED</u>
<u>Get-Printer-Subscriptions (section 8.3)</u>	<u>REQUIRED</u>
<u>Renew-Printer-Subscription (section 8.4)</u>	REQUIRED
<u>UnsubscribeCancel-Printer-Subscription (section 8.5)</u>	REQUIRED

~~ISSUE 26 - Can there be registered event extensions as well as private event extensions?~~

11 IANA Considerations

IANA will be called on to register URL schemes for notification delivery for use in the "notification-recipient" attribute, using the same procedures outlined in [ipp-mod].

12 Internationalization Considerations

This IPP notification specification continues the internationalization of [ipp-mod] for attributes containing text strings and names. A subscribing client can specify a different natural language and charset for each Notification content delivered to a Notification Recipient.

The Human Consumable Notification content is a 'text/plain; charset=utf-8' by default where the Notification Sender has localized the text message as requested by the subscriber for the intended Notification Recipient.

13 Security Considerations

By far the biggest security concern is the abuse of notification: sending unwanted notifications to third parties (i.e., spam). The problem is made worse by notification addresses that may be redistributed to multiple parties (e.g. mailing lists). There exist scenarios where third party notification is required (see Scenario #2 and #3 in [ipp-not-req]). The fully secure solution would require active agreement of all recipients before sending out anything. However, requirement #9 in [ipp-req] ("There is no requirement for IPP Printer receiving the print request to validate the identity of an event recipient") argues against this. Certain systems may decide to disallow third party notifications (a traditional fax model).

Clients submitting notification requests to the IPP Printer has the same security issues as submitting an IPP/1.1 print job request. The same mechanisms used by IPP/1.1 can therefore be used by the client notification submission. Operations that require authentication can use the HTTP authentication. Operations that require privacy can use the HTTP/TLS privacy.

The notification access control model should be similar to the IPP access control model for Jobs. Creating a Per-Printer Notification Subscription object is associated with a user. Only the creator or an operator can cancel the subscription. The system may limit the listing of items to only those items owned by the user. Some subscriptions (e.g. those that have a lifetime longer than a job) can be done only by privileged users (users having operator and/or administrator access rights), if that is the authorization policy.

The standard security concerns (delivery to the right user, privacy of content, tamper proof content) apply to the notification delivery. IPP should use the security mechanism of the delivery method used. Some delivery mechanisms are more secure than others. Therefore, sensitive notifications should use the delivery method that has the strongest security.

~~ISSUE 27—Waiting for security requirements in the IPP/1.1 Notification Requirements, such as authorization and authentication for Renew Subscription and Unsubscribe.~~

14 Status Codes

~~Add~~The following status codes are defined as extensions for notification:

14.1 client-error-uri-~~notification~~-scheme-not-supported (0x04??)

The scheme of the client-supplied URI in a "notify-recipients" operation attribute in a ~~Create-Printer-Subscription create job, Subscribe Job, or Subscribe-Printer~~ operation is not supported. See [ipp-mod] section 3.1.7.

Note: There is no corresponding Per-Job subscription error, since the Printer object MUST ignore any errors in the "job-notify" operation attribute and perform the Job Creation operation (see section 5.1), since the job can still be printed.

ISSUE 4 - The client-error-uri-scheme-not-supported is already an IPP/1.1 status code and section 3.1.6.1 indicates that the "document-uri" attribute NEED NOT be returned in the Unsupported Attributes group, otherwise, we could use that error code and REQUIRE that offending "xxx-uri" attribute(s) to be returned.

14.2 server-error-too-many-subscriptions (0x04??)

The bounded set of concurrent Per-Printer subscriptions supported by the Printer object would be exceeded if this request were accepted.

Note: There is no corresponding Per-Job subscription error, since the Printer object MUST ignore any errors in the "job-notify" operation attribute and perform the Job Creation operation (see section 5.1), since the job can still be printed.

14.3 server-error-too-many-events (0x04??)

The client supplied more events in the "notify-events" operation attribute in a Create-Printer-Subscription that the Printer supports, as indicated in its "max-events-supported" attribute (see section 5.5.4).

Note: There is no corresponding Per-Job subscription error, since the Printer object MUST ignore any errors in the "job-notify" operation attribute and perform the Job Creation operation (see section 5.1), since the job can still be printed.

ISSUE 5 - Should the entire "job-notify" operation attribute be ignored, if one of its member attributes has a problem, or should just that member attribute be ignored? If the latter, then is just the member attribute returned in the Unsupported Attributes group?

15 References

~~[draft-prtmb]~~

~~Turner, R., "Printer MIB", <draft-ietf-printmib-mib-info-04.txt>, work in progress, January 22, 1999.~~

[ipp-coll]

deBry, R., , Hastings, T., Herriot, R., "Internet Printing Protocol/1.0 & 1.1: collection attribute syntax", <draft-ietf-ipp-collection.doc>, work in progress, August 22, 1999.

[ipp-mod]

deBry, R., , Hastings, T., Herriot, R., Isaacson, S., Powell, P., "Internet Printing Protocol/1.1: Model and Semantics", <draft-ietf-ipp-model-v11-04.txt>, work in progress, June 23, 1999.

[ipp-not-hist]

deBry, R., Lewis, H., Hastings, T., "Internet Printing Protocol/1.1: Requirements for IPP Notifications", <draft-ietf-ipp-not-change-history-00.doc>, work in progress, August 22, 1999.

[ipp-not-req]

deBry, R., Lewis, H., Hastings, T., "Internet Printing Protocol/1.1: Requirements for IPP Notifications", <draft-ietf-ipp-not-03.txt>, work in progress, August 11, 1999.

[ipp-set2adm]

Kugler, C., , Hastings, T., "Internet Printing Protocol/1.0 & 1.1: Additional Administrative Operations, Set 2", <draft-ietf-ipp-ops-set2admin-990719.txt>, work in progress, July 19 August 22, 1999.

- 1930 [ipp-prog]
1931 Hastings, T., Bergman, R., Lewis, H., "Proposed Job Progress Attributes for IPP", <~~draft-ietf-ipp-~~
1932 ~~job-prog-attr-990518.txt~~> work in progress, May 18, 1999.
- 1933 [~~RFC1759]~~
1934 ~~Smith, R., Wright, F., Hastings, T., Zilles, S., and Gyllenskog, J., "Printer MIB", RFC 1759, March~~
1935 ~~1995.~~
- 1936 [~~RFC1892]~~
1937 ~~Vaudreuil, G., "The Multipart/Report Content Type for the Reporting of Mail System~~
1938 ~~Administrative Messages, RFC 1892, January 1996.~~
- 1939 [RFC2046]
1940 Multipurpose Internet Mail Extensions (MIME) Part Two: Media Types. N. Freed & N. Borenstein.
1941 November 1996. (Obsoletes RFC1521, RFC1522, RFC1590), RFC 2046.
- 1942 [RFC2119]
1943 S. Bradner, "Key words for use in RFCs to Indicate Requirement Levels", RFC 2119 , March 1997
- 1944 [RFC2566]
1945 deBry, R., , Hastings, T., Herriot, R., Isaacson, S., Powell, P., "Internet Printing Protocol/1.0: Model
1946 and Semantics", RFC 2566, April 1999.
- 1947 [~~sense]~~
1948 ~~Martin, J. et al., "System Event Notification System Environment (SENSE)",~~
1949 ~~ftp://ftp.pwg.org/pub/pwg/sense/, work in progress, Spring 1996.~~
- 1950

1951 **16 Author's Addresses**

- 1952 Scott A. Isaacson (Editor)
1953 Novell, Inc.
1954 122 E 1700 S
1955 Provo, UT 84606
- 1956
1957 Phone: 801-861-7366
1958 Fax: 801-861-2517
1959 e-mail: sisaacson@novell.com
- 1960
1961 Tom Hastings
1962 Xerox Corporation
1963 737 Hawaii St. ESAE 231
1964 El Segundo, CA 90245
- 1965
1966 Phone: 310-333-6413
1967 Fax: 310-333-5514

1968 e-mail: hastings@cp10.es.xerox.com

1969

1970 Roger deBry

1971 Utah Valley State College

1972 Orem, UT 84058

1973

1974 Phone: (801) 222-8000

1975 EMail: debryro@uvsc.edu

1976

1977 Jay Martin

1978 e-mail: jkm@underscore.com

1979

1980 Michael Shepherd

1981 Xerox Corporation

1982 800 Phillips Road MS 128-51E

1983 Webster, NY 14450

1984

1985 Phone: 716-422-2338

1986 Fax: 716-265-8871

1987 e-mail: mshepherd@crt.xerox.com

1988

1989 Ron Bergman (Editor)

1990 Dataproducts Corp.

1991 1757 Tapo Canyon Road

1992 Simi Valley, CA 93063-3394

1993

1994 Phone: 805-578-4421

1995 Fax: 805-578-4001

1996 Email: rbergman@dpc.com

1997

1998 ~~**17 Appendix A: Registration Forms to be filled out and submitted to IANA**~~

1999 ~~**16.2 Registration of ipp-udp-notify scheme for use with IPP**~~

2000 ~~This appendix contains the information that IANA requires for registering a URL scheme for use with the~~
2001 ~~"application/ipp" MIME media type. The information following this paragraph will be forwarded to IANA~~
2002 ~~to register 'ipp-udp-notify' whose contents are defined in Section 5.1.1 "notify recipients (1setOf uri)" in~~
2003 ~~this document:~~

2004 ~~**TBD**~~

2005

2006 ~~**Required parameters: none**~~

2007 ~~**Optional parameters: none**~~

2008

Encoding considerations:

2009

Security considerations:

2010

~~IPP/1.0 protocol requests/responses do not introduce any security risks not already inherent in the~~

2011

~~underlying transport protocols. Protocol mixed-version interworking rules in [ipp-mod] as well as protocol~~

2012

~~encoding rules in [ipp-pro] are complete and unambiguous.~~

2013

Interoperability considerations:

2014

TBD

2015

2016

Published specification:

2017

~~[ipp-not]—Isaacson, S., Martin, J., deBry, R., Hastings, T., Shepherd, M., "Internet Printing Protocol/1.0 &~~

2018

~~1.1: IPP Event Notification" draft-ietf-ipp-not-02.txt, May, 1999.~~

2019

Applications which use this URL scheme:

2020

TBD

2021

Person & email address to contact for further information:

2022

~~Thomas N. Hastings~~

2023

~~Xerox Corporation~~

2024

~~737 Hawaii St.~~

2025

~~El Segundo, CA 90245~~

2026

2027

~~Phone: (310) 333-6413~~

2028

~~Fax: (310) 333-5514~~

2029

~~Email: hastings@ep10.es.xerox.com~~

2030

16.3 Registration of multipart/report type, 'print-notification'

2031

~~We may have to register a particular report sub-type for use with 'multipart/report' [RFC 1892]. See RFC~~

2032

~~2298 for a similar kind of registration. The use of 'multipart/report' needs more understanding and work.~~

2033

2034

A. Appendix - Summary of Notification Attribute Usage

2035

This appendix summarizes the usage of Notification attributes in the Job operation attribute collection, Job

2036

object, Subscription object, Notification content, Job operations, and Subscriptions operations.

2037

ISSUE 6 - Should this appendix be kept in the spec or moved to the Implementer's Guide?

2038

Attributes	Objects		Notification content		Job operations		Subscription operations		
	Job <u>object</u>	Subscription object	Job Notificat ion Content	Printer Notificat ion Content	Job Creation Validate -Job	Set- Job- Subscri ption	Create- Printer- Subscri ption	Renew - Subscri ption	Cancel - Subscri ption
1. notify-recipients (1setOf uri)	R	R			[R]	[R]	[R]		
2. notify-events (1setOf type2 keyword)	R	R		100	[R]	[R]	[R]		
3. notify-content-type (mimeType)	R	R			[R]	[R]	[R]		
4. <u>subscriber</u> notify-user-data (octetString(63))	R	R	R	R	[R]	[R]	[R]		
5. attributes-charset (charset)	R*		<u>R(6)</u>	<u>R(6)</u>	R	R	R	R	R
6. notify-attributes-charset (charset)	R	<u>OR</u>	<u>R</u>	<u>R</u>	[O]	[O]	[O]		
7. attributes-natural-language (naturalLanguage)	R*	<u>R</u>	<u>R(8)</u>	<u>R(8)</u>	R	R	R	R	R
8. notify-attributes-natural-language (naturalLanguage)	R	<u>OR</u>	<u>R</u>	<u>R</u>	[O]	[O]	[O]		
9. notify-lease-time-requested (integer(0:MAX))							[R]	[R]	
10. notify-lease-time-granted (integer(0:MAX))							Return	Return	
11. notify-lease-expiration-time (integer(0:MAX))		R					Return	Return	
12. notify-persistence-requested (boolean)							[O]		
13. notify-persistence-granted (boolean)							Return	<u>Return</u>	
14. trigger-event (type2 keyword)			R (2)	R (2)					
15. trigger-time (integer(MIN:MAX))			R	R					
16. trigger-date-time (dateTime)			[]	[]					
17. request-id (integer (0+MAX))	R	R	R	R					
18. subscription-id (integer(1:MAX))	**	R	R	R			Return	R	R

2039 Legend: "R" - REQUIRED for Printer to support; "O" - OPTIONAL for Printer to support; "[]" - OPTIONAL for sender to send;
 2040 Return - Printer MUST return; "Per-Pr" - REQUIRED if Notification from a Per-Printer subscription; * - Job object, not collection;

2041 "Per-Job" - REQUIRED if Notification from a Per-Job subscription; (nn) indicates source of value in a Notification;
 2042 ** - 1setOf collection index is the implicit subscription-id for a Per-Job subscription and is sent in the Notification.

2043

Attributes	Objects		Notification		Job operations		Subscription operations		
	Job object	Subscription object	Job Notification	Printer Notification	Job Creation Validate -Job	Set-Job-Subscription	Create-Printer-Subscription	Renew - Subscription	Cancel - Subscription
19. version-number (integer (0:32767))			R	R					
20. status-code (integer (0:32767))			(600)	(601)					
21. job-printer-uri (uri)	R		<u>R (22)</u>						
22. printer-uri (uri)		R	<u>R (21)</u>	<u>R (21)</u>	R	R	R	R	R
23. printer-name (name(127))			R	R					
24. job-id (integer(1:MAX))	R		R	Per-Jb					
25. job-name (name(MAX)) [SNMP can truncate]	R		R	Per-Jb					
26. requesting-user-name (name(MAX))	R								
27. subscriber-user-name (name(MAX))		R	R (26)	R (26)					
28. job-state (type1 enum)	R		R						
29. job-state-reasons (1setOf type2 keyword)	R		R						
30. <u>notify-printer-up-time (integer(1:MAX))</u>		<u>R</u>							
31. job-k-octets-processed (integer(0:MAX))	O		[pg/cp]						
32. job-impressions-completed (integer(0:MAX))	O		[pg/cp]						
33. job-media-sheets-completed (integer(0:MAX))	O		[pg/cp]						
34. job-collation-type (type2 enum)	O		[pg/cp]						
35. sheet-completed-copy-number (integer(-2:MAX))	O		[pg/cp]						
36. sheet-completed-document-number(integer(-2:MAX))	O		[pg/cp]						
37. impressions-interpreted (integer(-2:MAX))	O		[pg/cp]						
38. impressions-completed-current-copy (integer(-2:MAX))	O		[pg/cp]						

2044 Legend: "R" - REQUIRED for Printer to support; "O" - OPTIONAL for Printer to support; []" - OPTIONAL for sender to send;
2045 "Return - Printer MUST return; "Per-Pr" - REQUIRED if Notification from a Per-Printer subscription;
2046 "Per-Jb" - REQUIRED if Notification from a Per-Job subscription;
2047 "[pg/cp]" - OPTIONAL in a 'job-progress' or 'job-completed' notification; (nn) - an alternate source of the data in a Notification.

Attributes	Objects		Notification		Job operations		Subscription operations		
	Job object	Printer object	Job Notification	Printer Notification	Job Creation Validate -Job	Set-Job-Subscription	Create-Printer-Subscription	Renew-Subscription	Cancel-Subscription
39. printer-state (type1 enum)		R		R					
40. printer-state-reasons (1setOf type2 keyword)		R		R					
41. printer-is-accepting-jobs (boolean)		R		R					
42. notify-schemes-supported (1setOf uriScheme)		R							
notify-content-types-supported (1setOf collection)		R							
43. notify-events-default (1setOf type2 keyword)		R							
44. notify-events-supported (1setOf type2 keyword)		R							
45. max-events-supported (integer(5:MAX))		R							
46. max-job-subscriptions-supported (integer(1:MAX))		R							
47. max-printer-subscriptions-supported (integer(0:MAX))		R							
48. notify-lease-time-supported (rangeOfInteger(0:MAX))		R							
49. notify-lease-time-default (integer(0:MAX))		R							
50. persistent-jobs-supported (boolean)		R							
51. persistent-subscriptions-supported (boolean)		O							
52. printer-state-change-time (integer(1MIN:MAX))		O							
53. printer-state-change-date-time (dateTime)		O							

2048 Legend: "R" - REQUIRED for Printer to support; "O" - OPTIONAL for Printer to support; "[]" - OPTIONAL for sender to send;
2049 Return - Printer MUST return; "Per-Pr" - REQUIRED if Notification from a Per-Printer subscription;
2050 "Per-Jb" - REQUIRED if Notification from a Per-Job subscription;
2051 "[pg/cp]" - OPTIONAL in a 'job-progress' or 'job-completed' notification; (nn) - an alternate source of the data in a Notification.

2052

2053 **17 Appendix C: Full Copyright Statement**

2054 Copyright (C) The Internet Society (1998,1999). All Rights Reserved

2055 This document and translations of it may be copied and furnished to others, and derivative works that
2056 comment on or otherwise explain it or assist in its implementation may be prepared, copied, published and
2057 distributed, in whole or in part, without restriction of any kind, provided that the above copyright notice
2058 and this paragraph are included on all such copies and derivative works. However, this document itself
2059 may not be modified in any way, such as by removing the copyright notice or references to the Internet
2060 Society or other Internet organizations, except as needed for the purpose of developing Internet standards in
2061 which case the procedures for copyrights defined in the Internet Standards process must be followed, or as
2062 required to translate it into languages other than English.

2063 The limited permissions granted above are perpetual and will not be revoked by the Internet Society or its
2064 successors or assigns.

2065 This document and the information contained herein is provided on an "AS IS" basis and THE INTERNET
2066 SOCIETY AND THE INTERNET ENGINEERING TASK FORCE DISCLAIMS ALL WARRANTIES,
2067 EXPRESS OR IMPLIED, INCLUDING BUT NOT LIMITED TO ANY WARRANTY THAT THE USE
2068 OF THE INFORMATION HEREIN WILL NOT INFRINGE ANY RIGHTS OR ANY IMPLIED
2069 WARRANTIES OF MERCHANTABILITY OR FITNESS FOR A PARTICULAR PURPOSE.

2070